

Downtown Dallas 360: 2015-2020

*Downtown Dallas is a **complete urban center composed of distinct yet interconnected districts** linked by an accessible transit network . . .*

Downtown Dallas 360: 2015-2020

*... each offering a unique and diverse combination of places to live, refreshing open spaces, bustling street activity, successful business and retail, and **dynamic urban experiences** for residents, workers and visitors alike.*



GOALS

- Reaffirm the vision
- Create a process by which all future development communicates under that vision
- Address comprehensive issues: Mobility, Urban Design, Housing, Open Space, Economics and Land Use
- Address specific district/neighborhood needs



KEY PHASES

- Outreach and Assessment
June 2015 – October 2015
- Transformative Strategies and Technical Studies
November 2015 – May 2016
- District and Corridor Microplans
November 2015 – May 2016
- Implementation Plan
November 2015 – May 2016

TONIGHT'S AGENDA!

- Introduction and Overview
- Presentation: Trends, Accomplishments, New Possibilities . . .
- Group Discussion: Your Ideas, Thoughts, Innovations!
- Neighborhood Gallery

downtowndallas360.com



PARTNERS

AIA Dallas

bcWorkshop

CBD Neighborhood Association

Cedars Neighborhood Association

CNU North Texas

Dallas Arts District

Dallas Center for Architecture

Dallas Institute for Humanities and Culture

Dallas Farmers Market Friends

The Dallas Entrepreneurs Center

Dallas Heritage Village

DART

Deep Ellum Community Association

Deep Ellum Foundation

Downtown Residents Council

Farmers Market Stakeholders Group

Fort Worth

Friends of Fair Park

Greater Dallas Planning Council

Health Wildcatters

Klyde Warren Park

North Central Texas Council of Governments

Preservation Dallas

Tech Wildcatters

The Real Estate Council

Trinity Trust

Texas Trees Foundation

Trinity Commons Foundation

ULI North Texas

West End Association

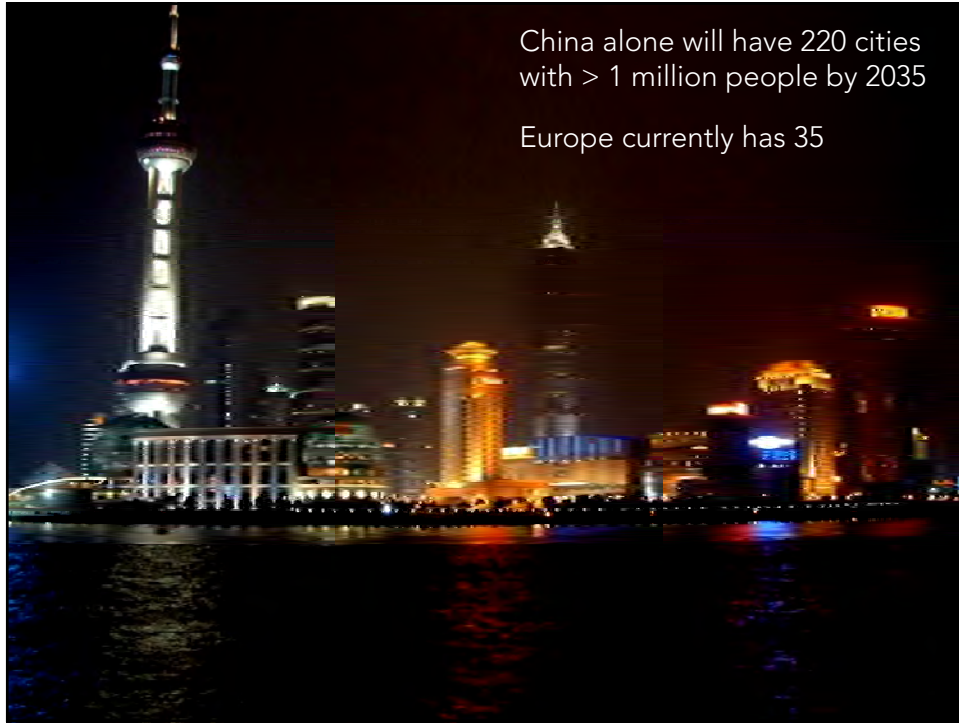


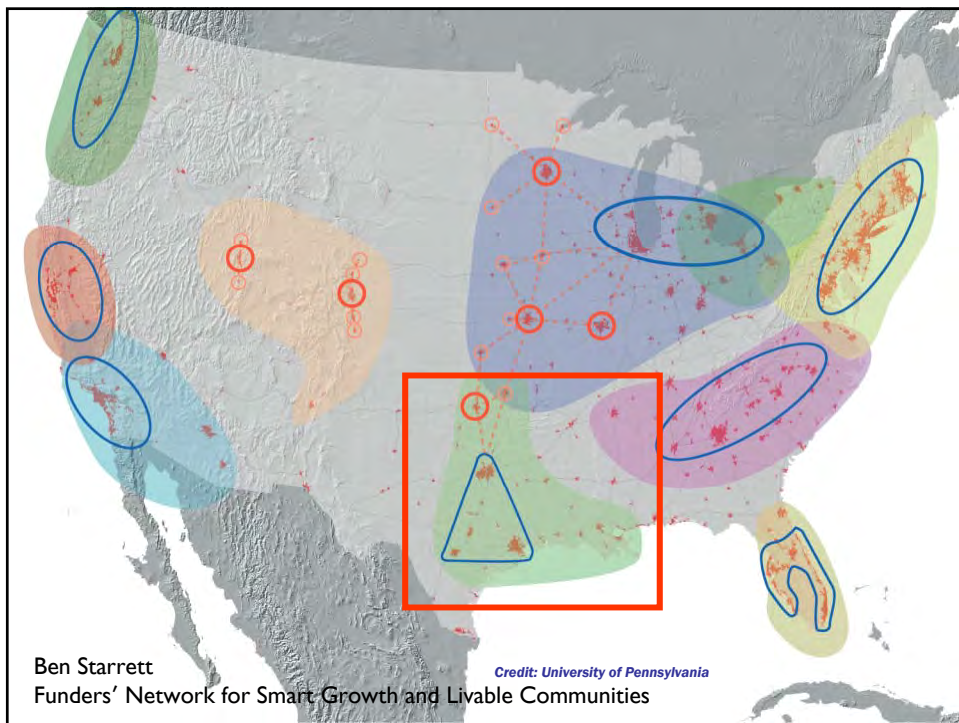
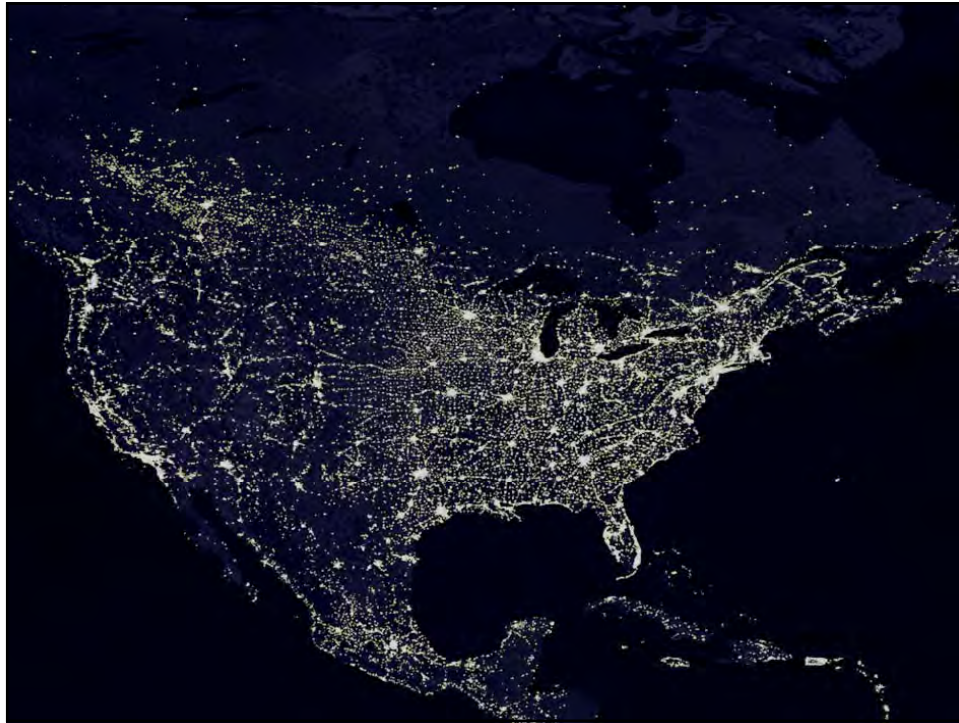
The world adds 200,000 city dwellers each day . . .



the equivalent of adding a city the size of Dallas every week!









Demographic trends now favor downtown

Growth across the country moves away from suburban and exurban fringe

[Facebook](#) 7
[Twitter](#) 2
[Google+](#) 0
[StumbleUpon](#) 2

[Believe](#)
[Drops](#)
[Data](#)
[Pawson](#)

We'll help you tell yours

[Photo](#)
[Video](#)

TODAY

TODAY | August 01, 2013

Urban shift has Americans bidding farewell to suburbs

The proverbial American dream of white picket fences in suburbia seems to have lost its luster as a radical new housing trend shows families staying out in the city. NBC's Mara

PERSONAL FINANCE | 9/9/2013 @ 1:33PM | 14,253 views

What 'The End Of The Suburbs' Means For Boomers

Richard Eisenberg, Contributor

[Comment Now](#)
[Follow Comments](#)

Leigh Gallagher's provocative new book, [The End of the Suburbs](#), really hit home for me, as I suspect it will for my fellow boomers.

We're the first generation to have grown up in the 'burbs, and more than 70 percent of folks in their late 40s, 50s and 60s live there today. (I was raised in one New Jersey suburb and now live in another, where my wife and I raised our sons; she spent her childhood in

Thinkstock

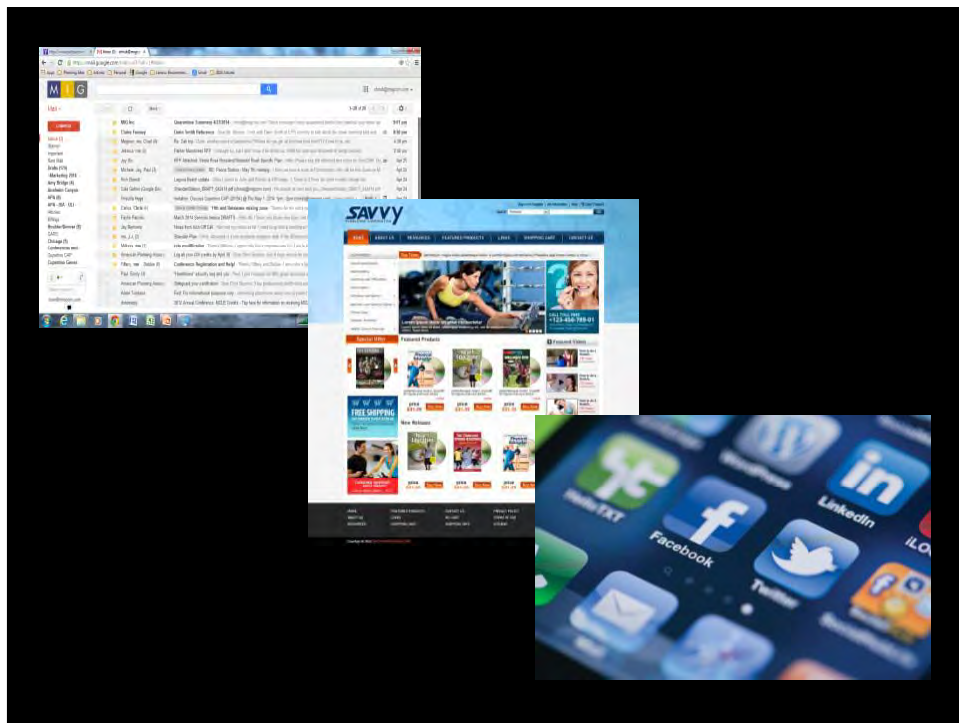


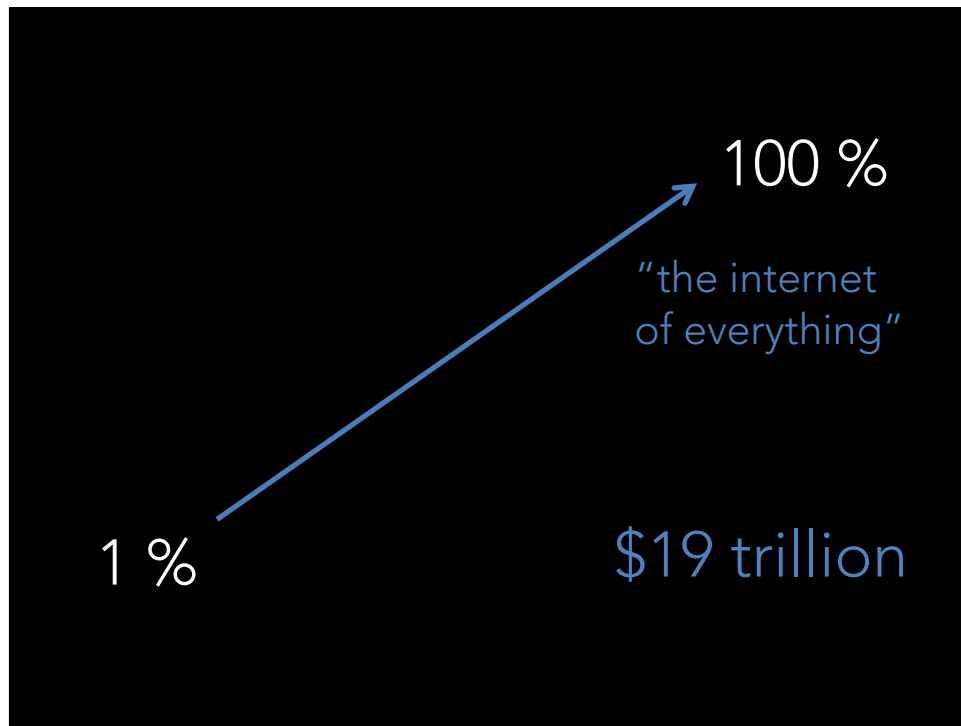
Rebuilding America's Infrastructure:
According to Bloomberg News Service the Price Tag Will Be . . .

1 IN 4 OF THOSE BRIDGES
SUPPORTS MORE TRAFFIC THAN ORIGINALLY INTENDED.
OR NEEDS SIGNIFICANT REPAIRS.
That's a total of 150,000 unstable bridges.

One-third of U.S. Roadways
are in substandard condition.

\$3 Trillion!





Energy Sector Investments to the Year 2035 . . .

A cumulative global investment bill of more than

\$40 trillion in energy supply and the remainder in
energy efficiency.

WORLD ENERGY INVESTMENT OUTLOOK
2014 FACTSHEET

International Energy Institute

Energy Sector Investments to the Year 2035 . . .

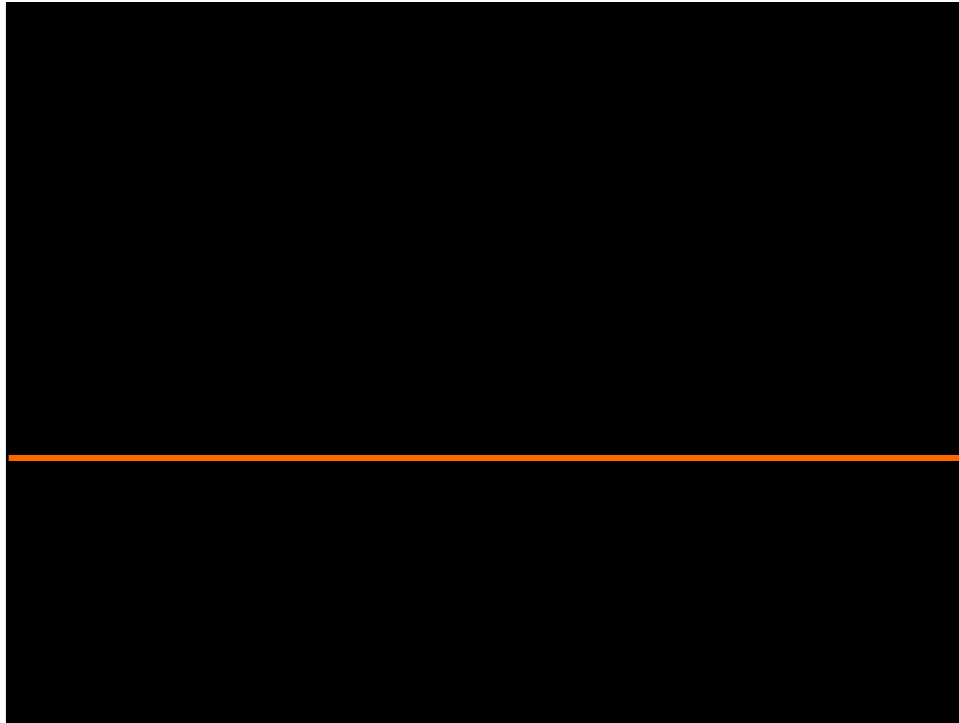
A cumulative global investment bill of more than

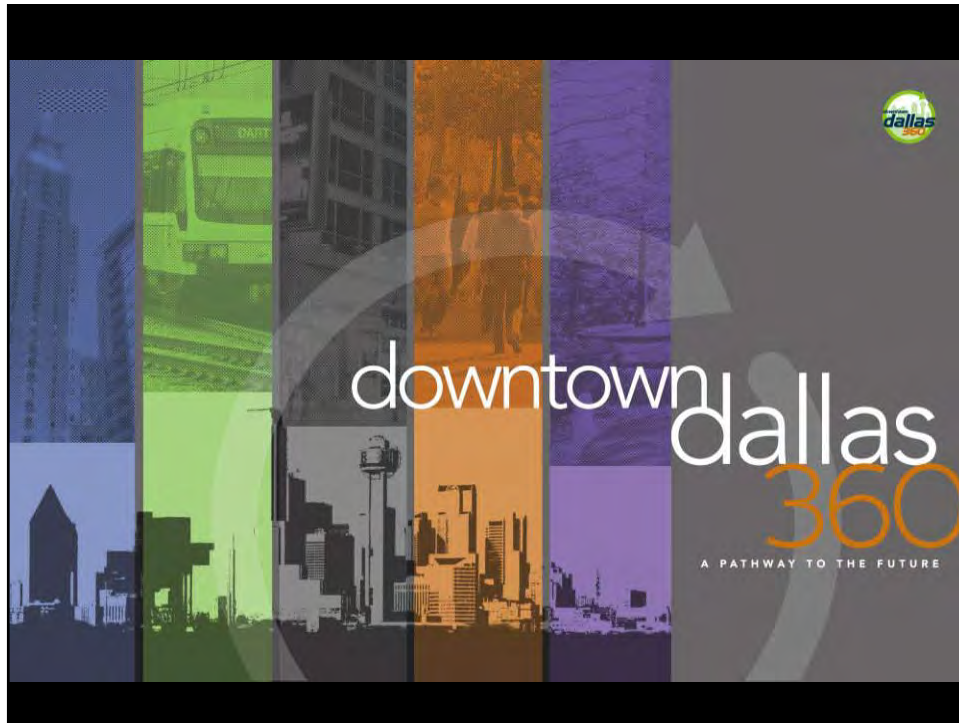
\$48 Trillion

\$40 trillion in energy supply and the remainder in
energy efficiency.

WORLD ENERGY INVESTMENT OUTLOOK
2014 FACTSHEET

International Energy Institute







The average annual operating cost of a bicycle is \$308 . . .

compared to \$8,220 for the average car.

Forbes Real Time Popular Lists Video
--17 posts this hour Secret Power Of Intro Highest-Paid Actors Buffett, ...

LIFESTYLE 5/20/2012 @ 7:46AM 11,892 views

Pedaling to Prosperity: Biking Saves U.S. Riders Billions A Year

+ Comment now

New data highlight that bicyclists in the United States save at least \$4.6 billion a year by riding instead of driving.

The analyses were released on Friday to coincide with National Bike to Work Day, part of National Bike Month, which occurs each May.

The average annual operating cost of a

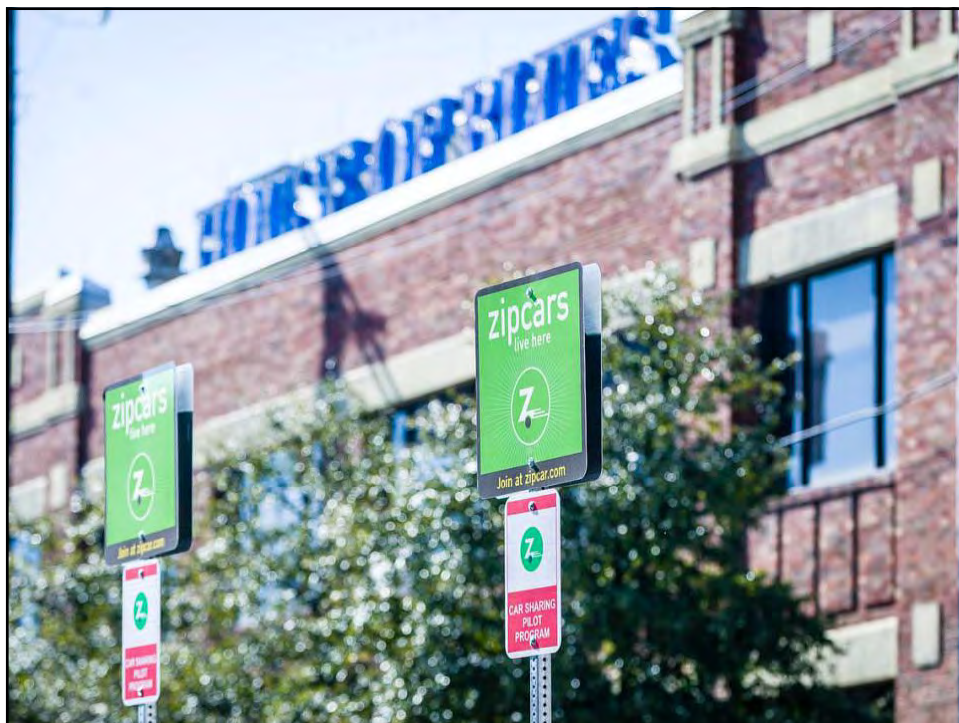
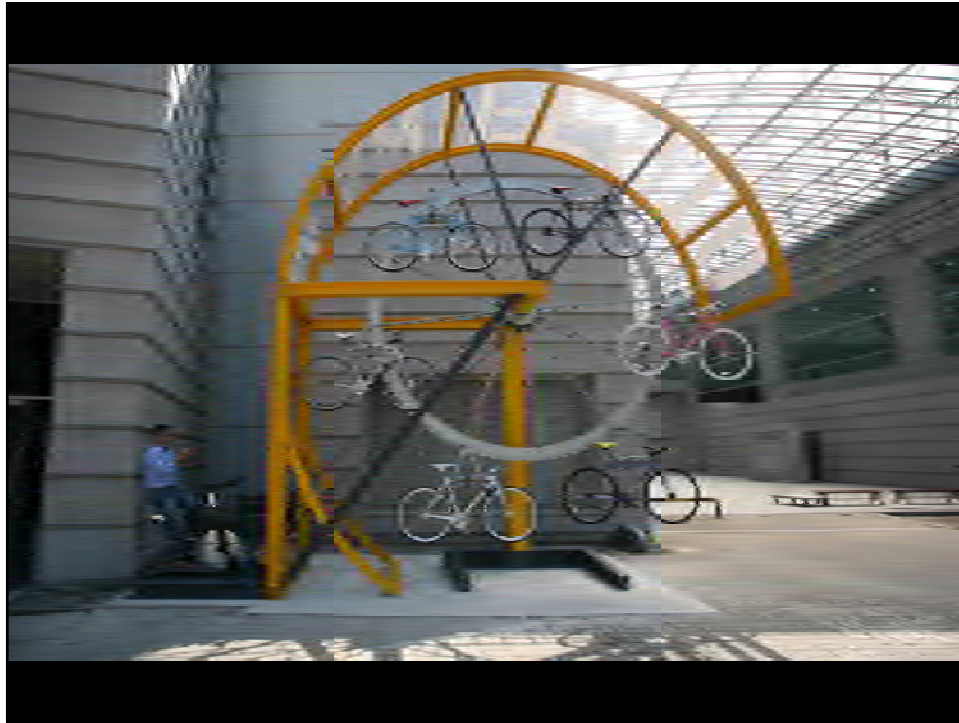


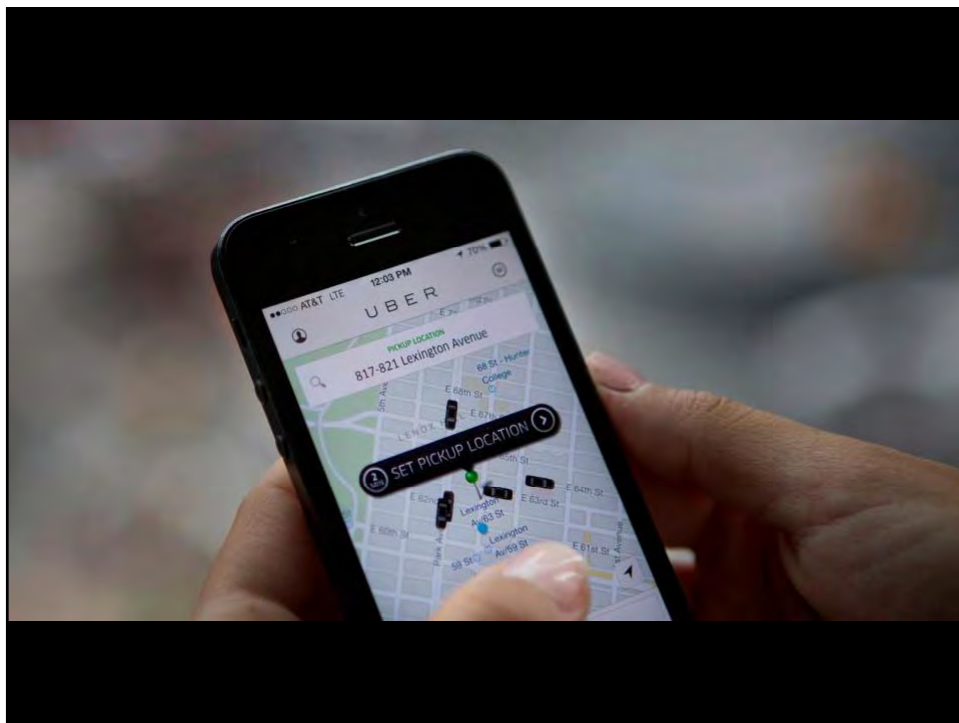
4323
Share
501
Tweet
65
+1
222
Share
4004

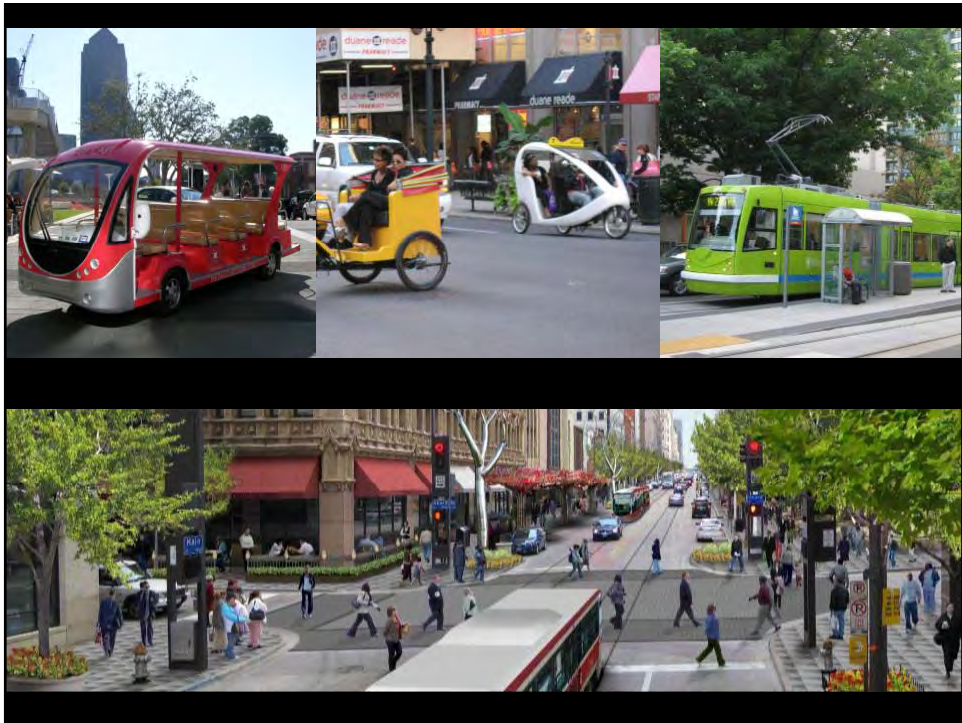
Recommended          find more to follow

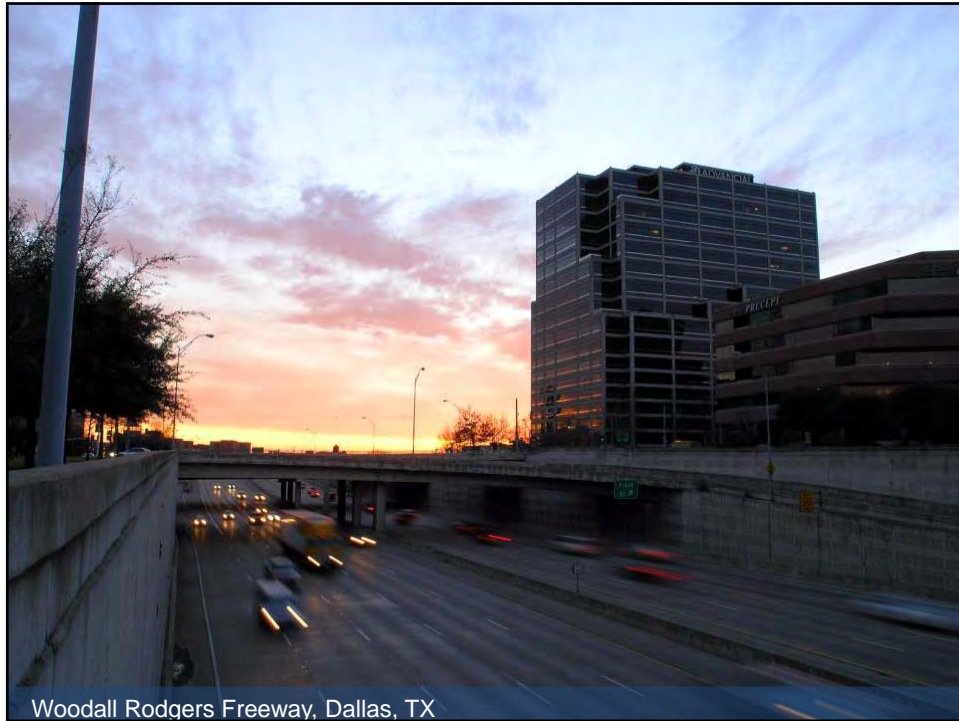




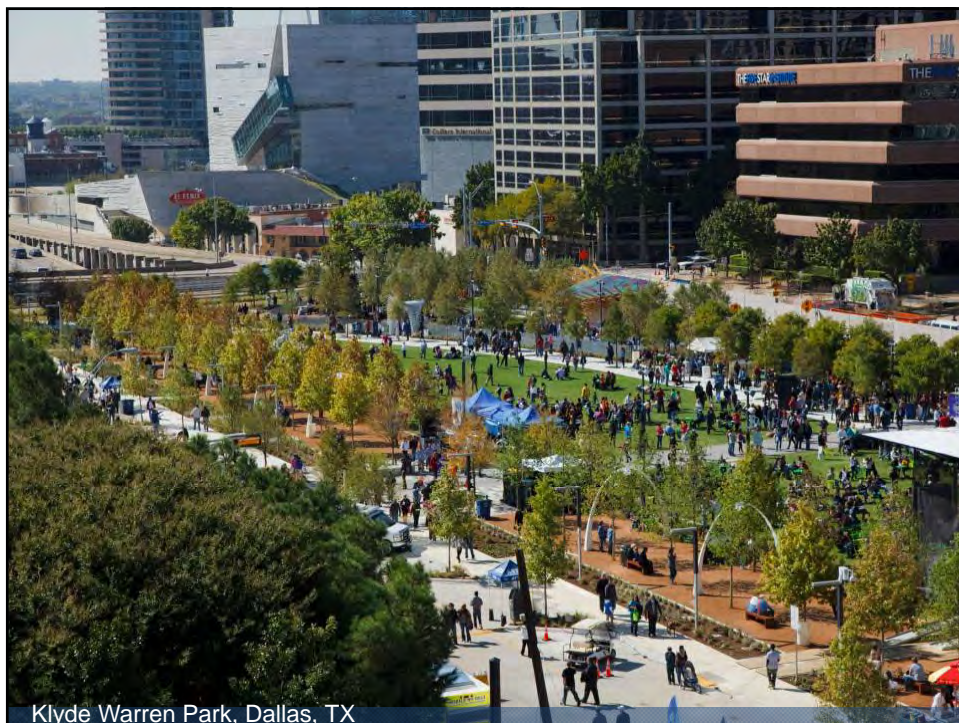








Woodall Rodgers Freeway, Dallas, TX



Klyde Warren Park, Dallas, TX

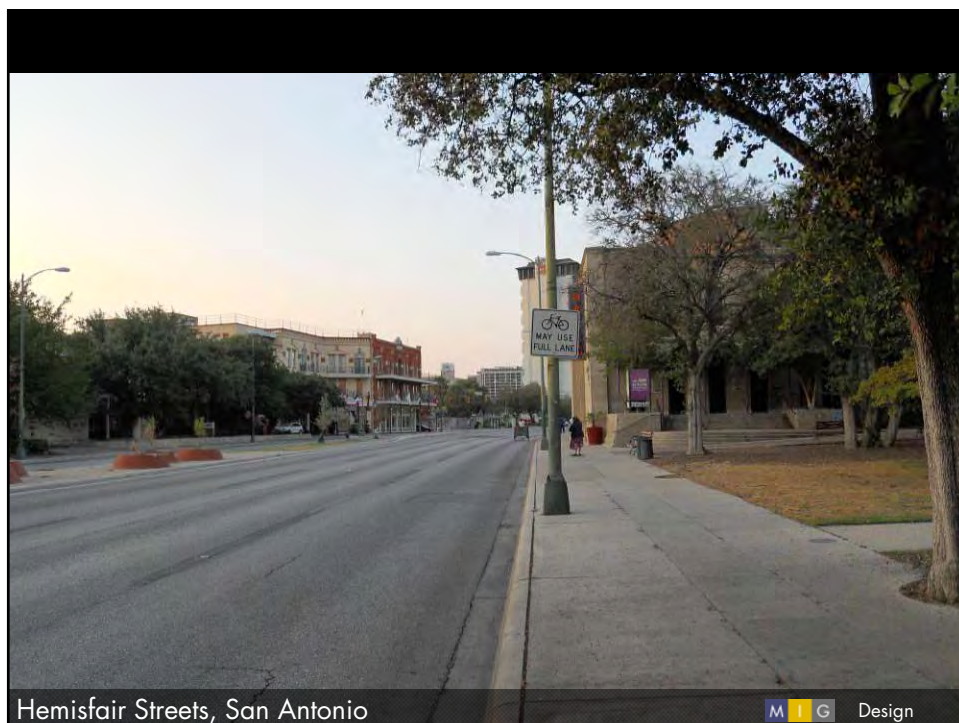
Hemisfair Park, San Antonio

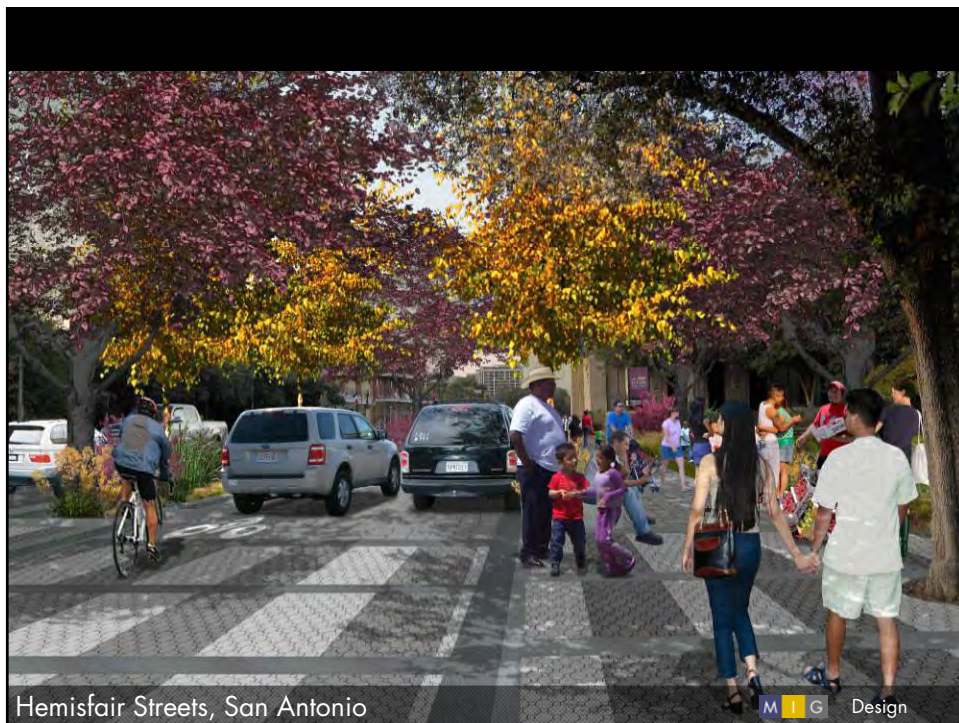


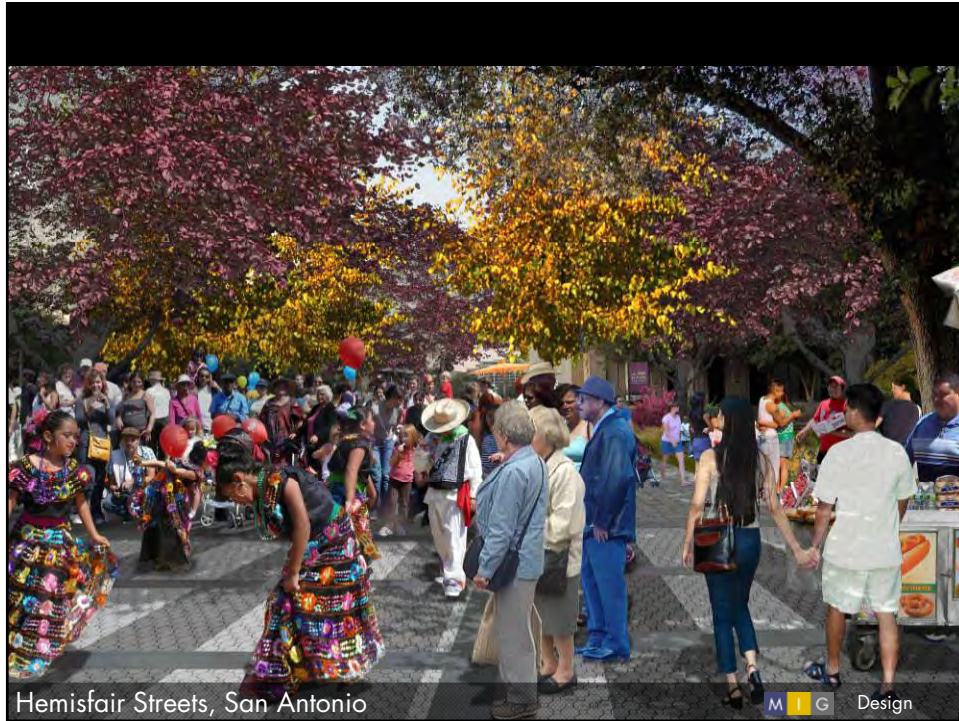
Hemisfair Park, San Antonio



Hemisfair Park, San Antonio

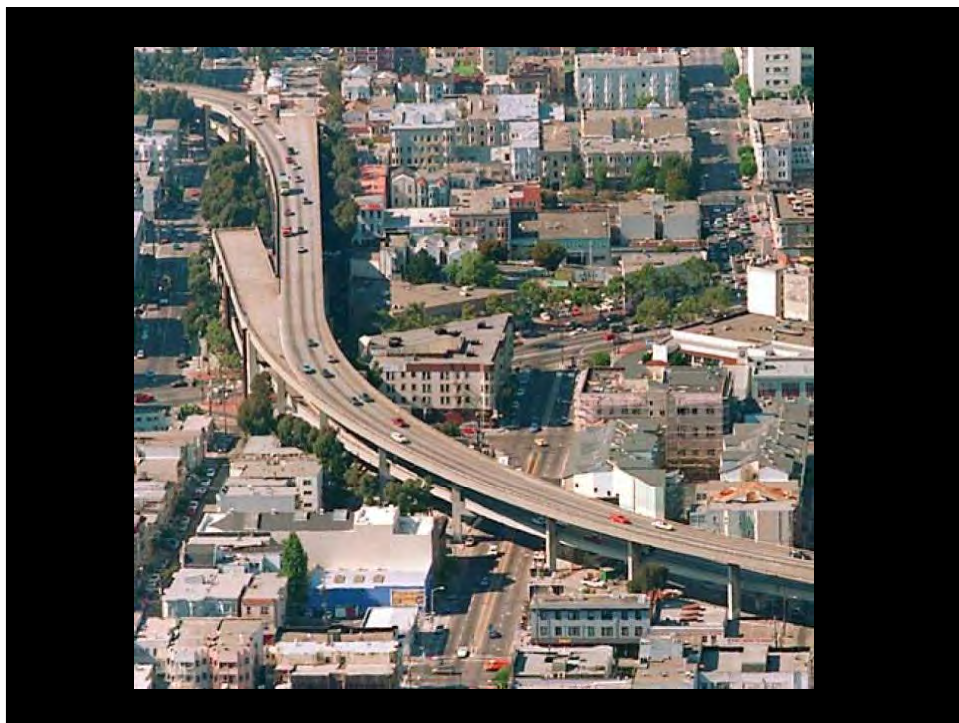


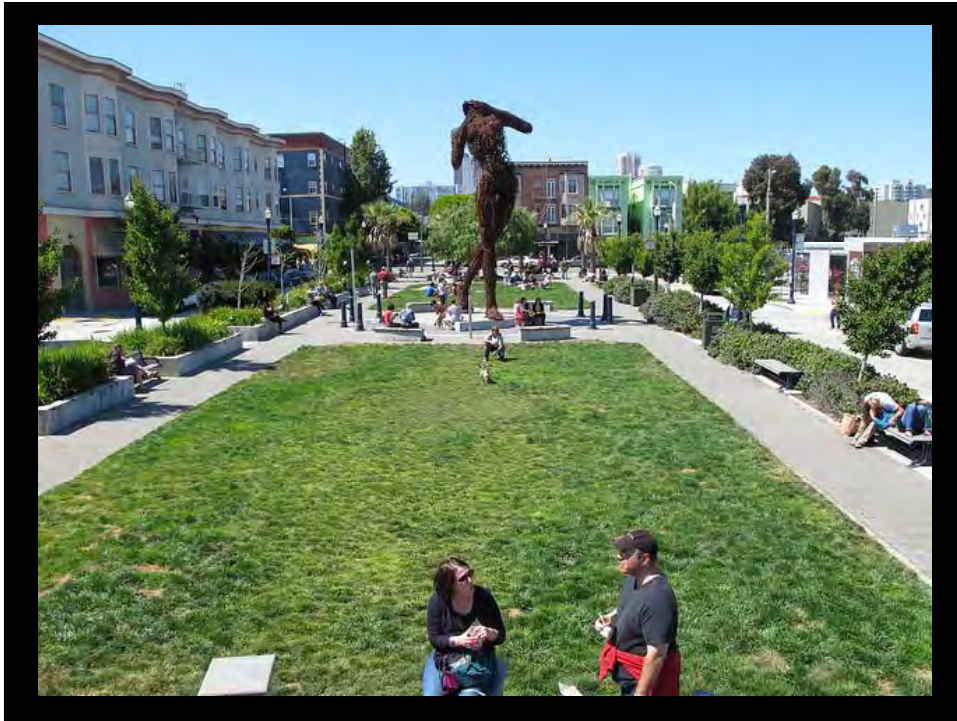


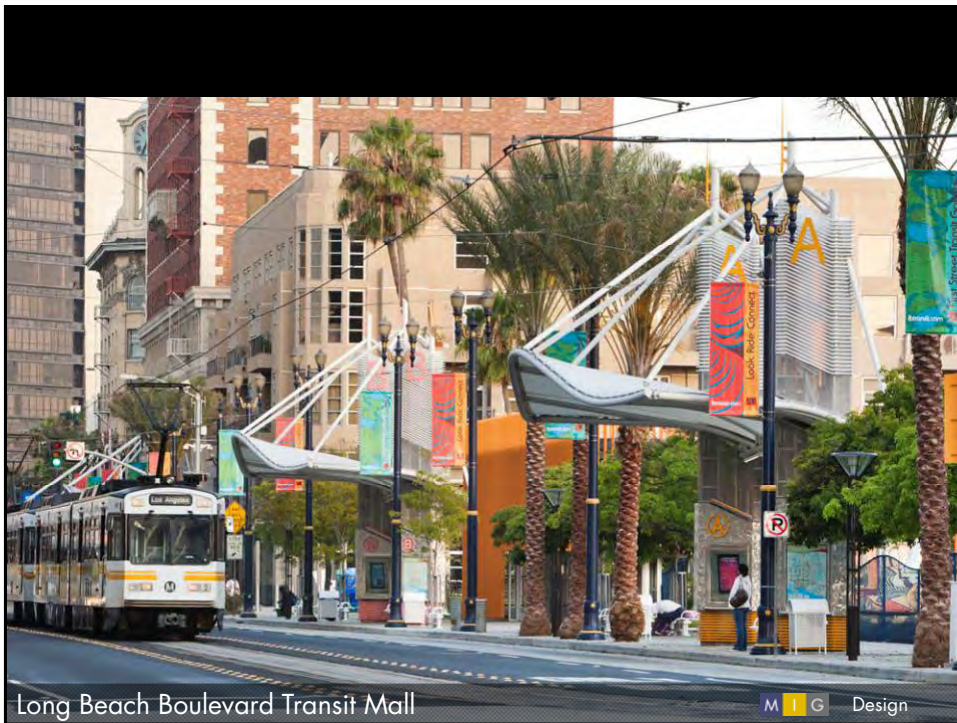


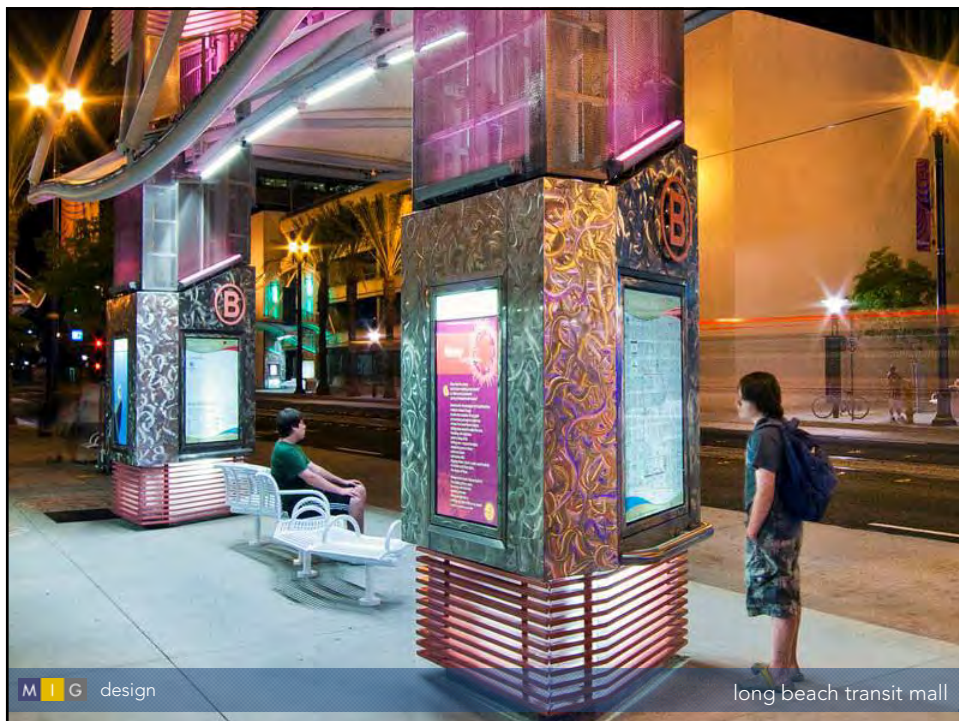
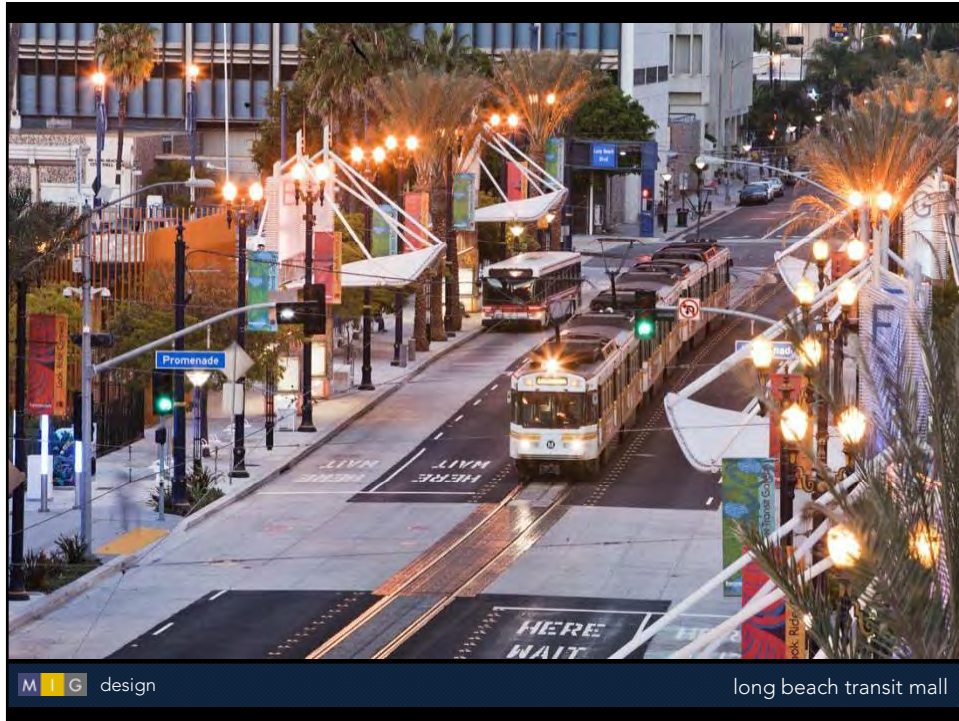
Hemisfair Streets, San Antonio

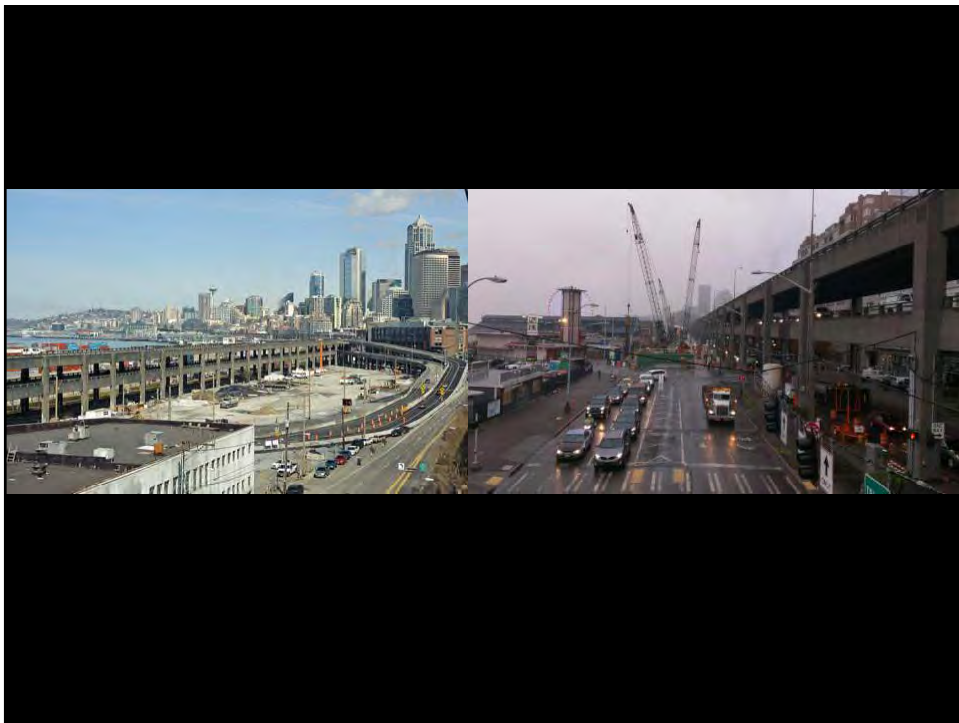
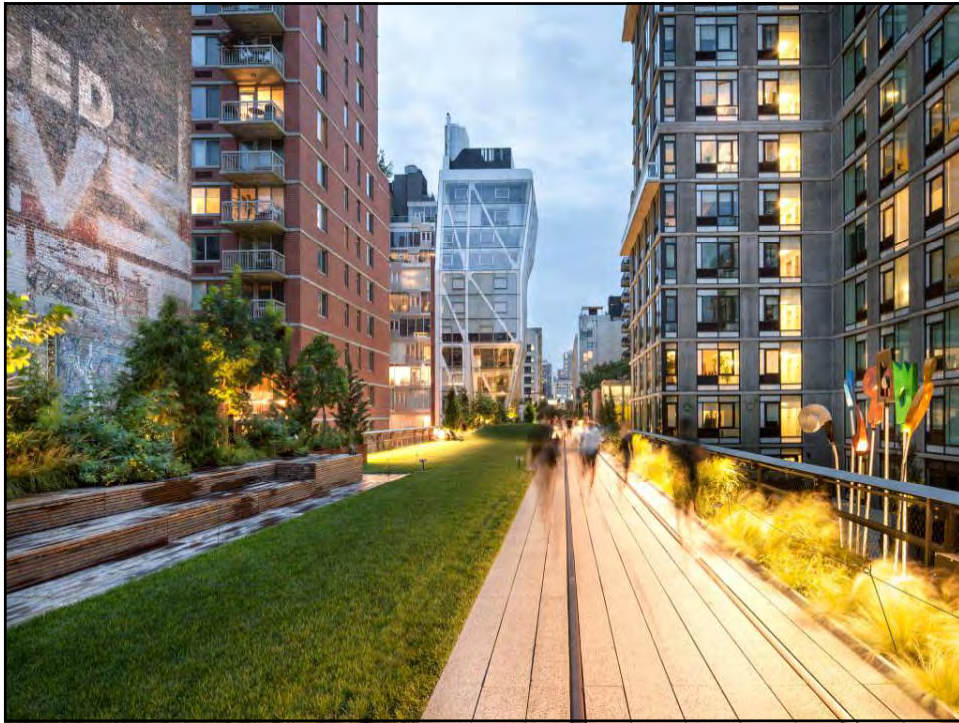
M I G Design

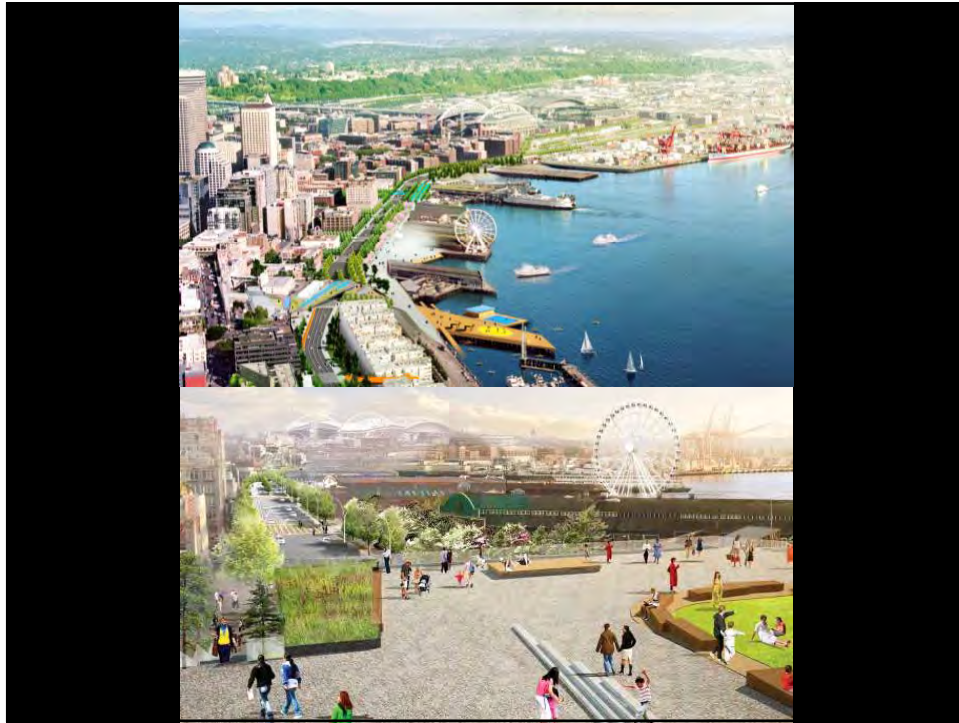




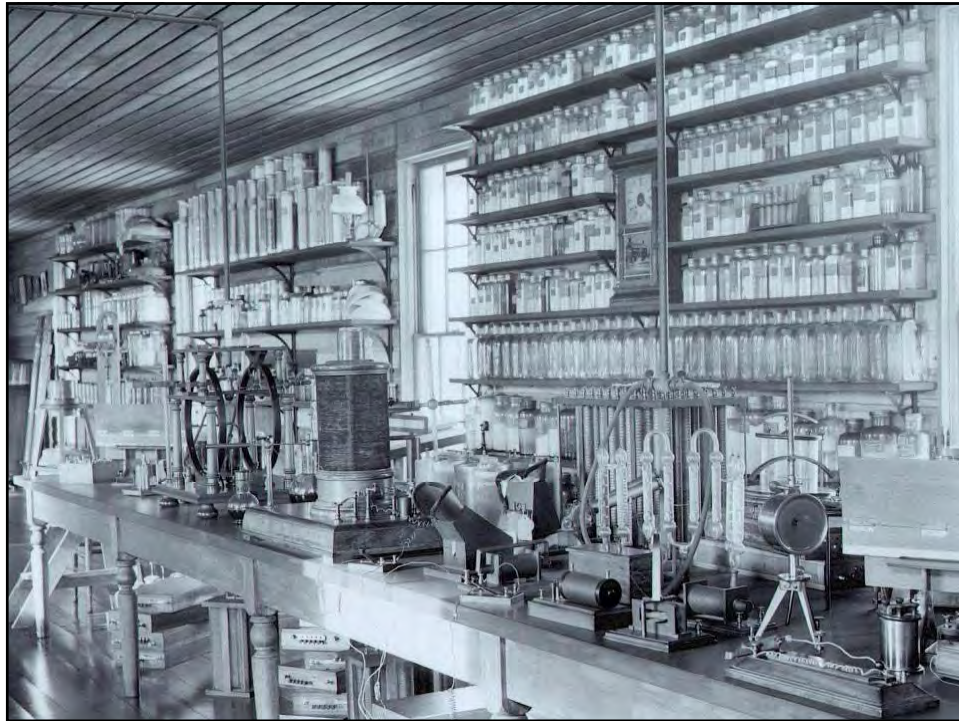


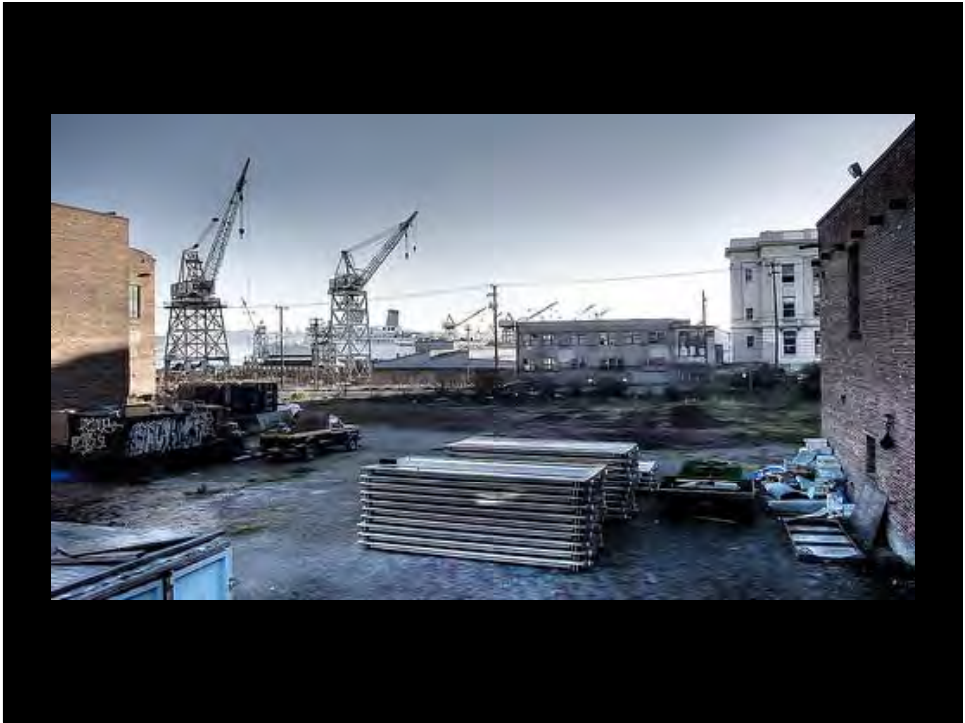




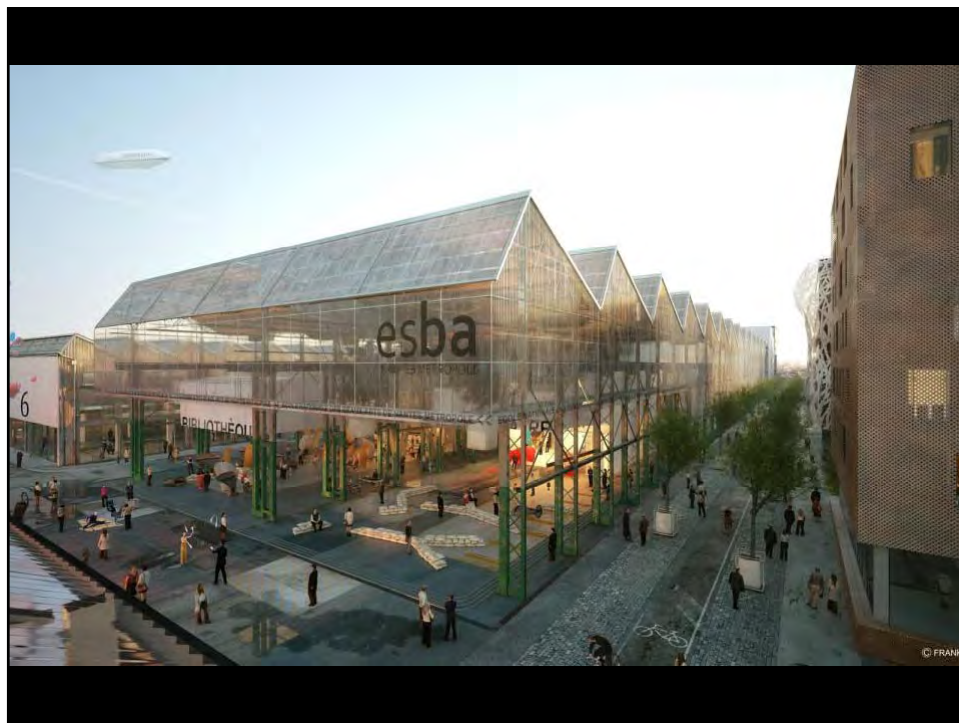


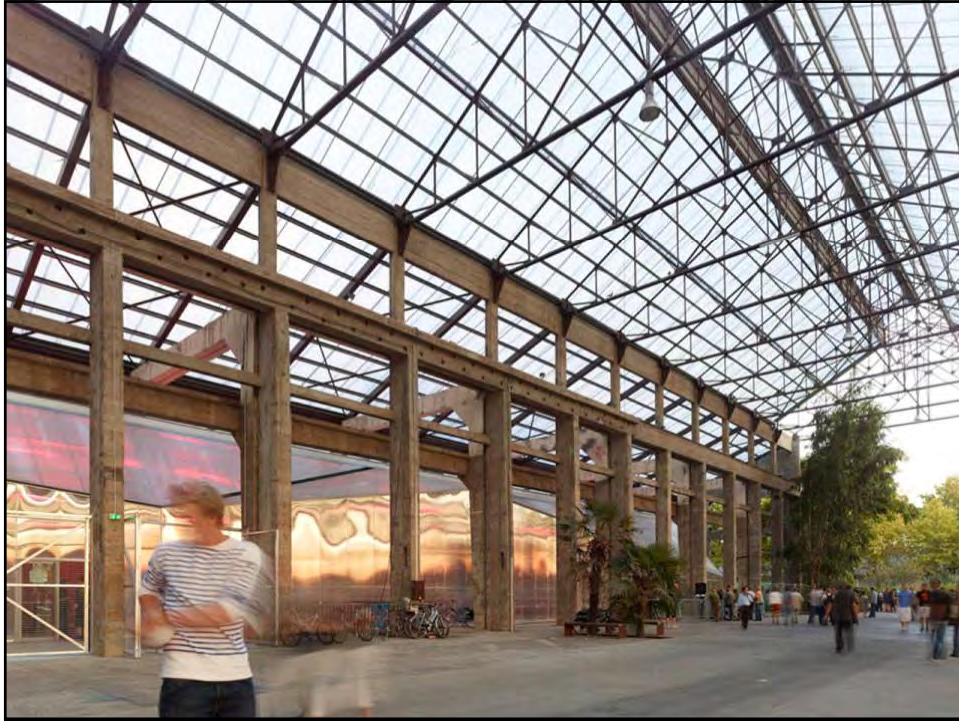


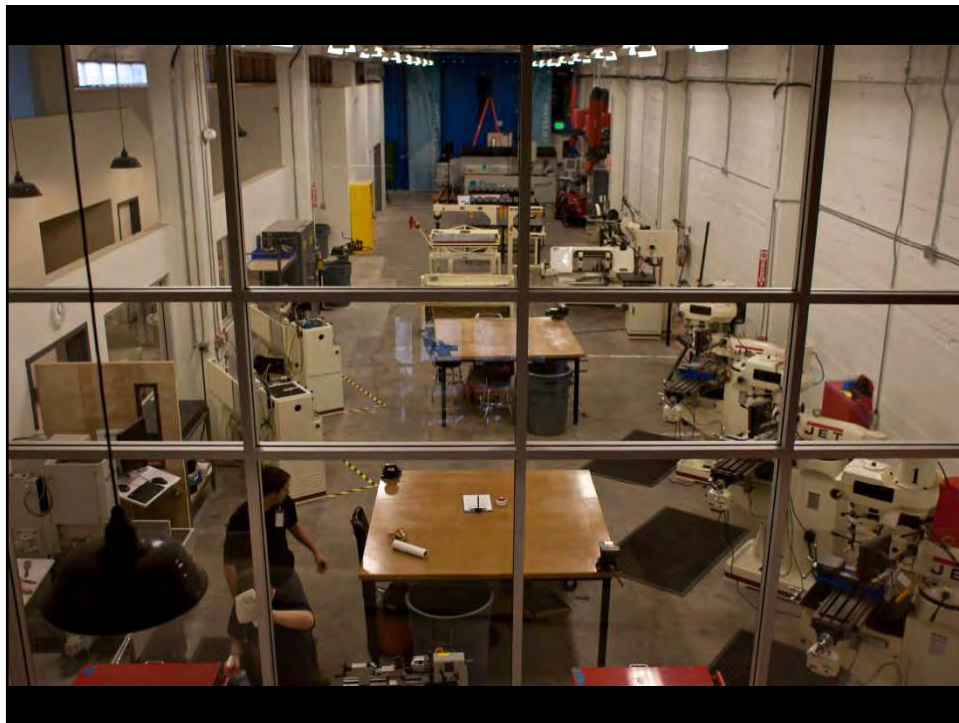




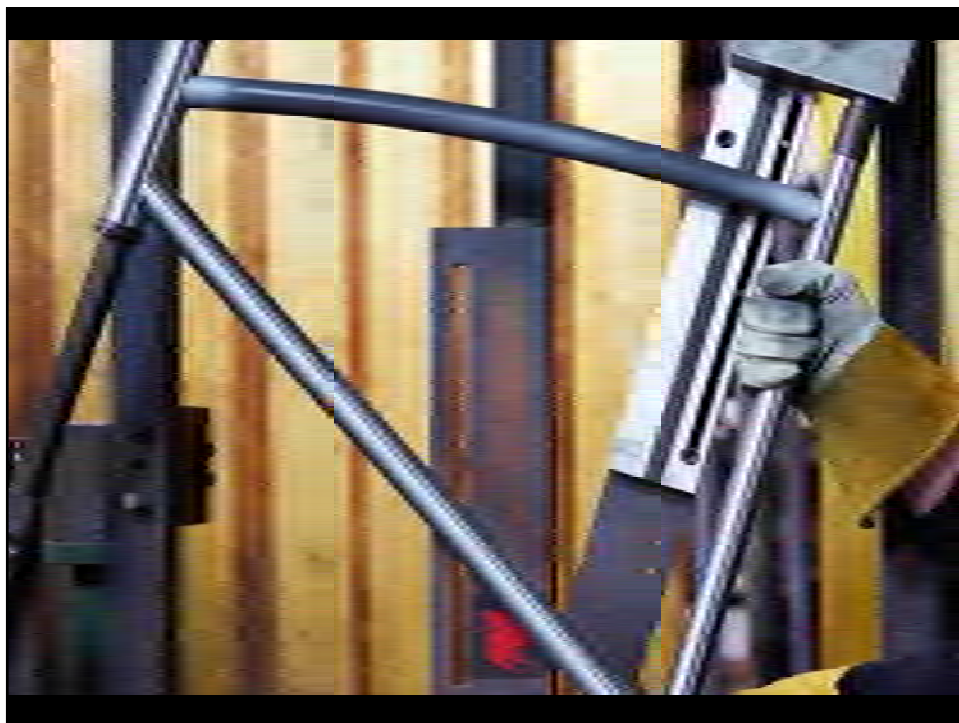
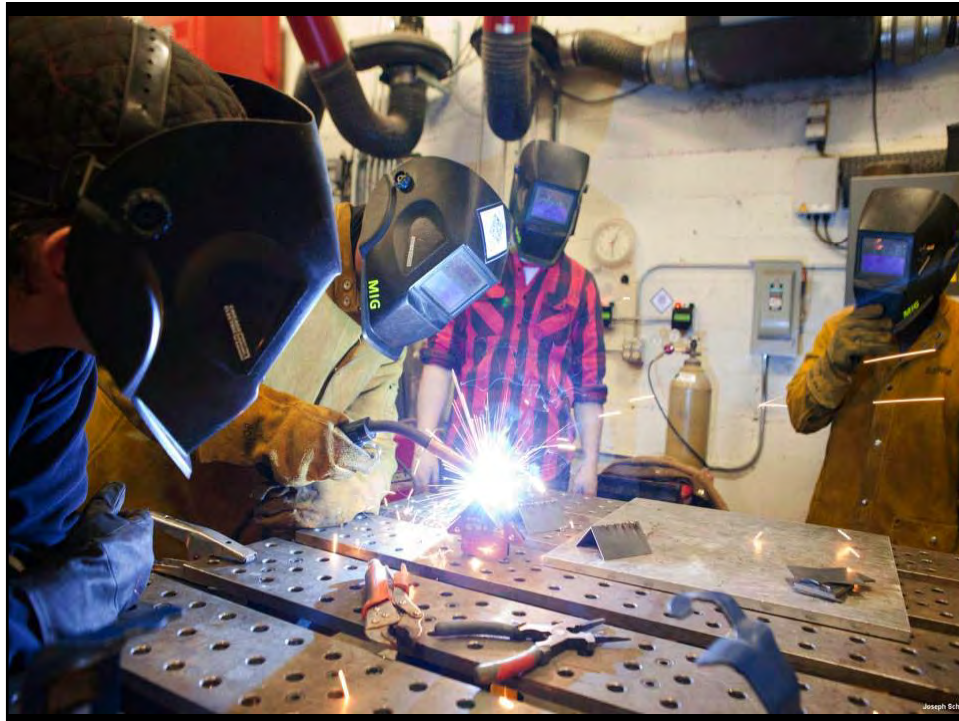










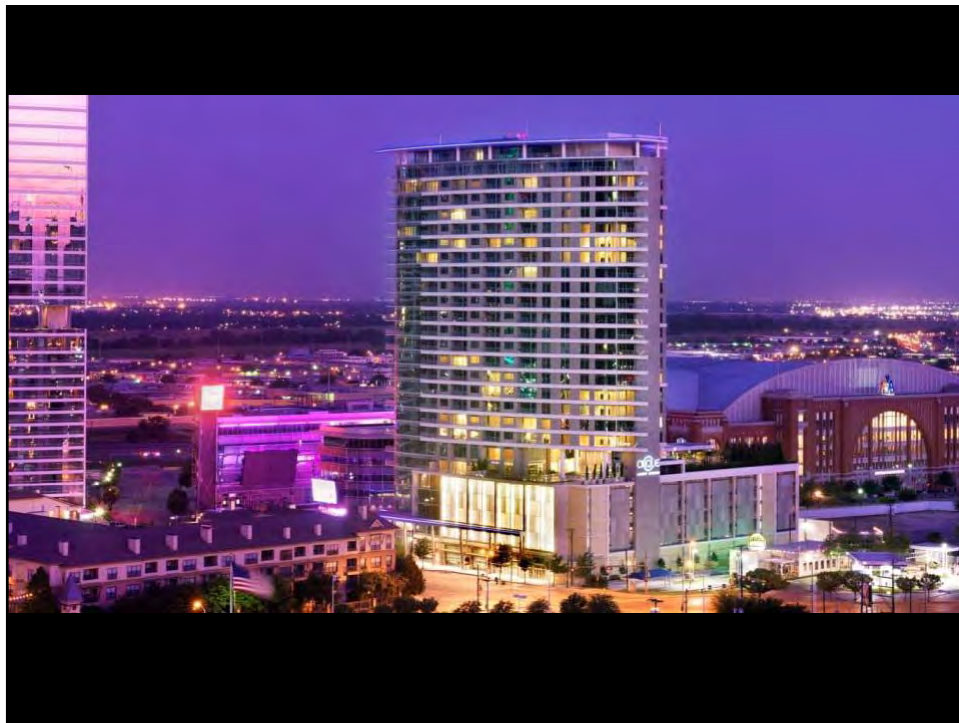
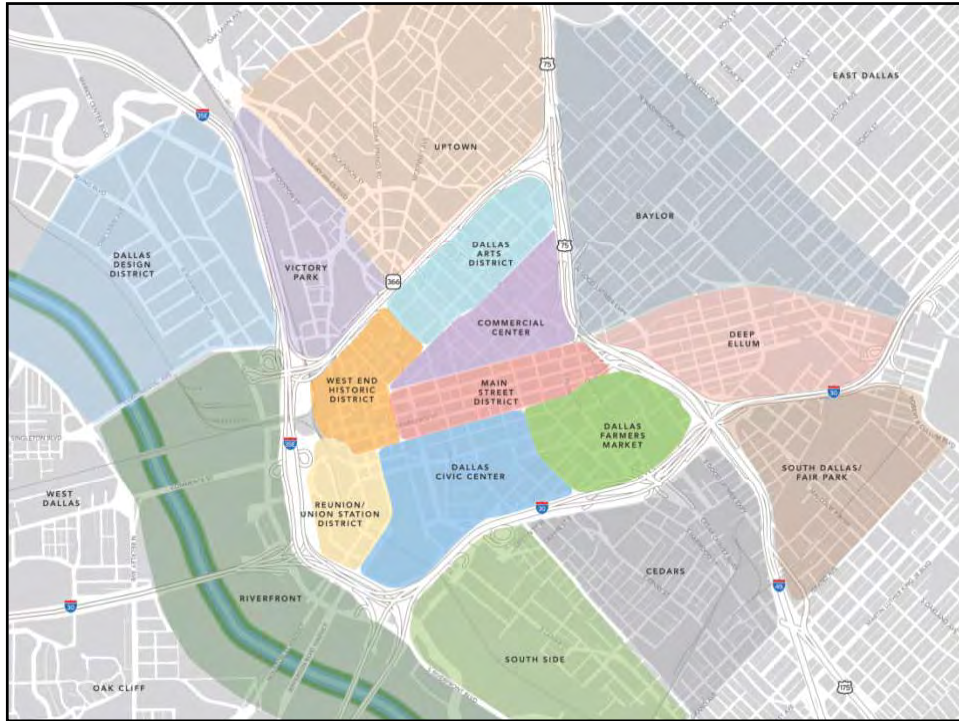


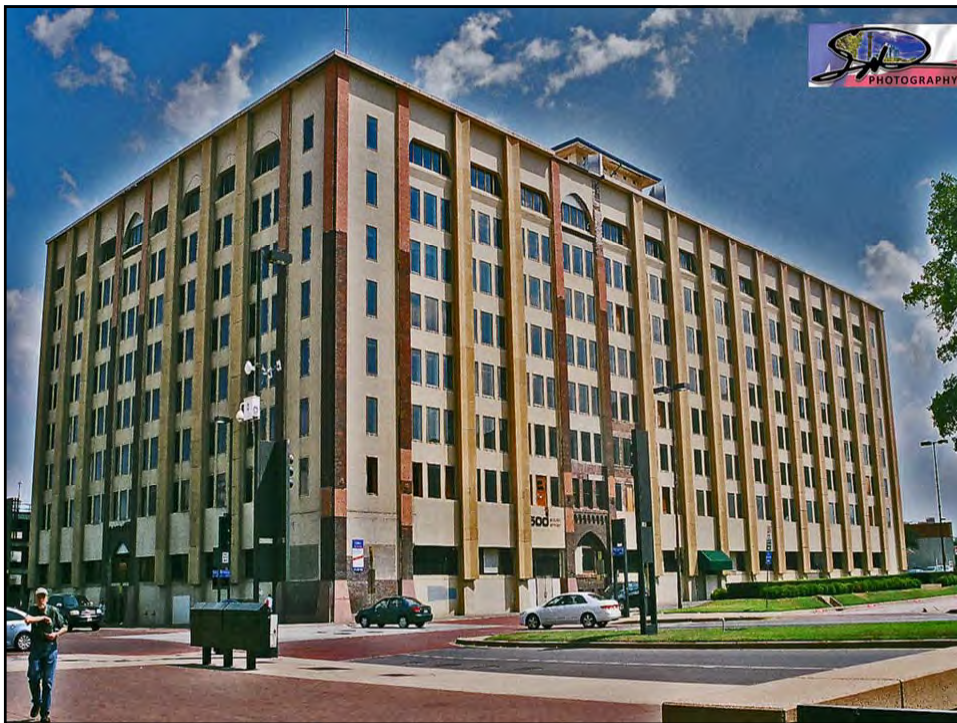


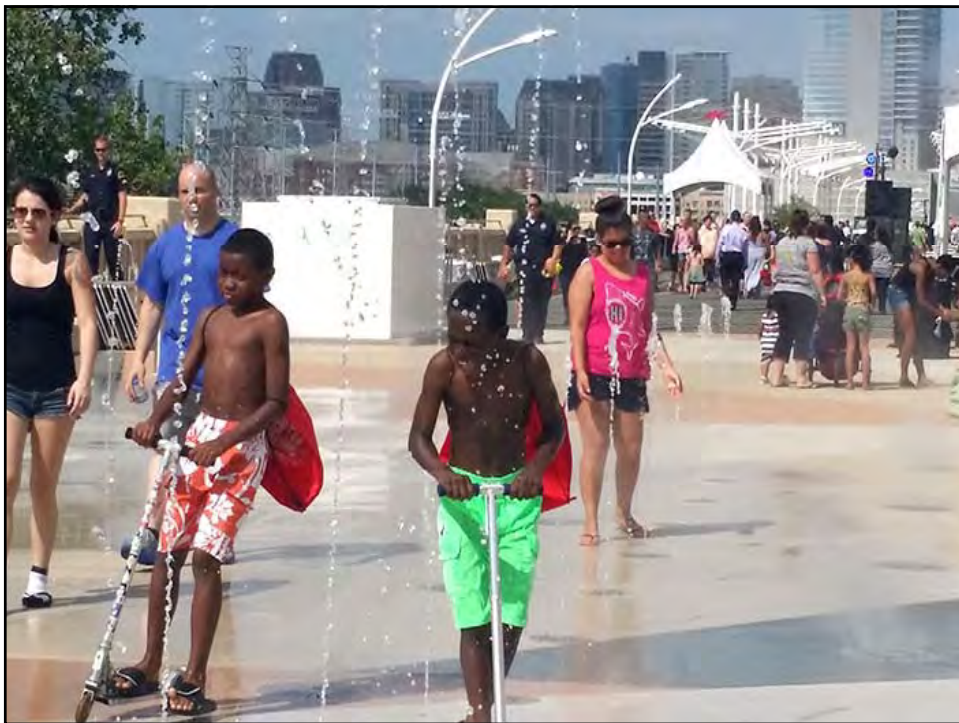


VW Plant – Dresden, Germany













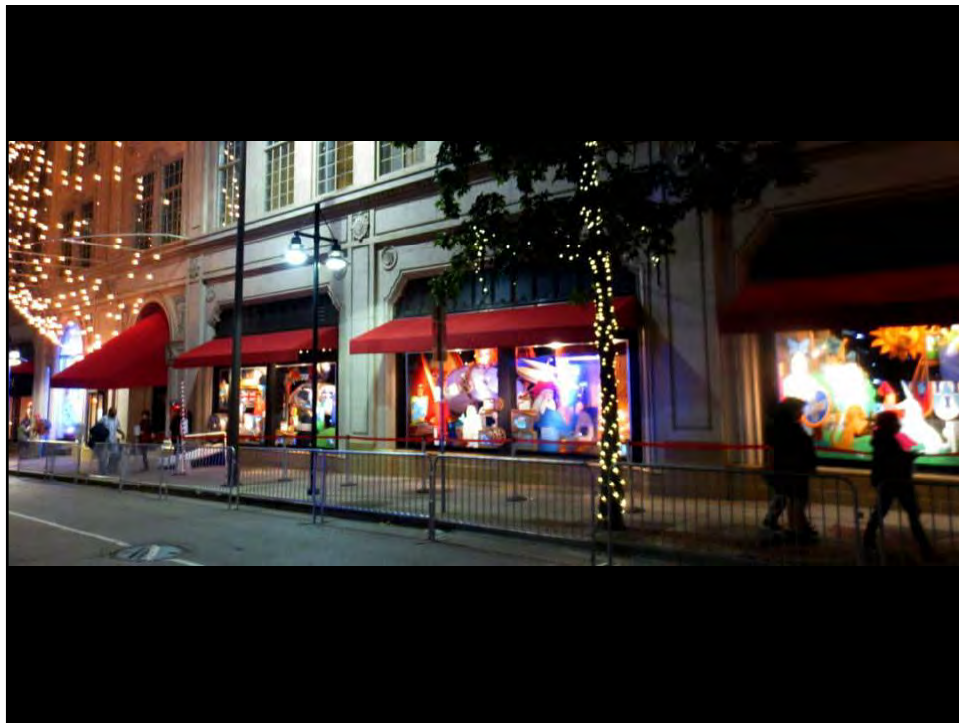






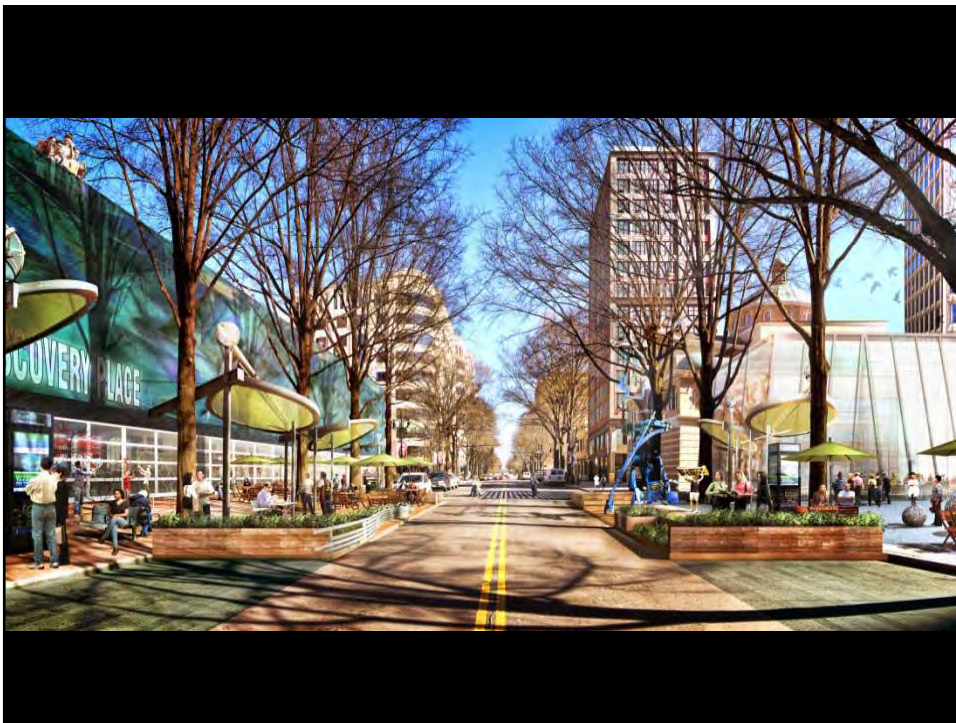


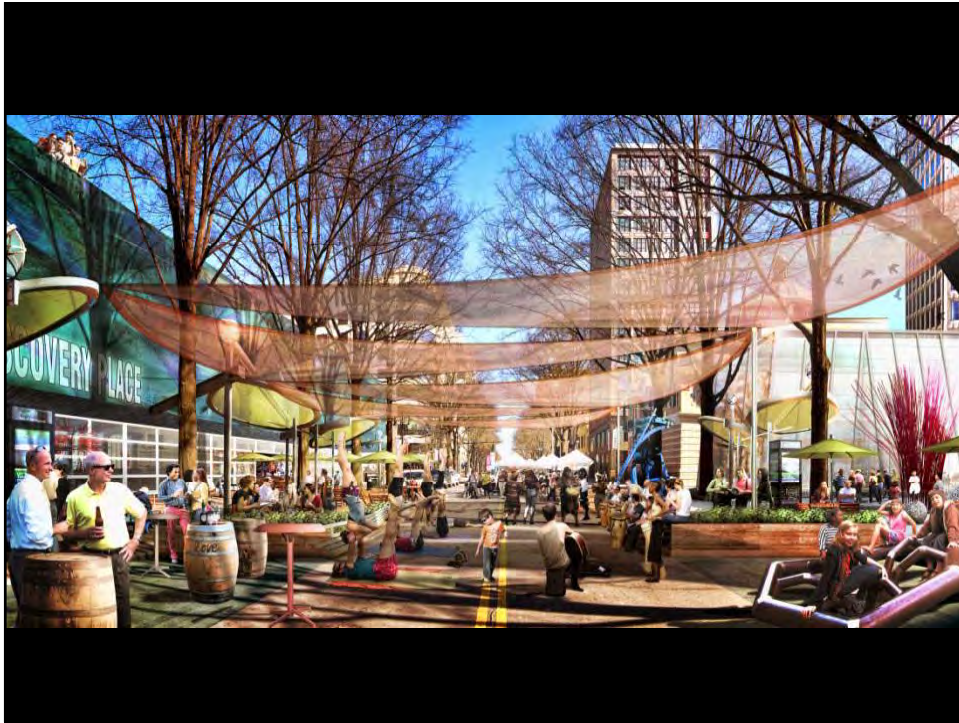




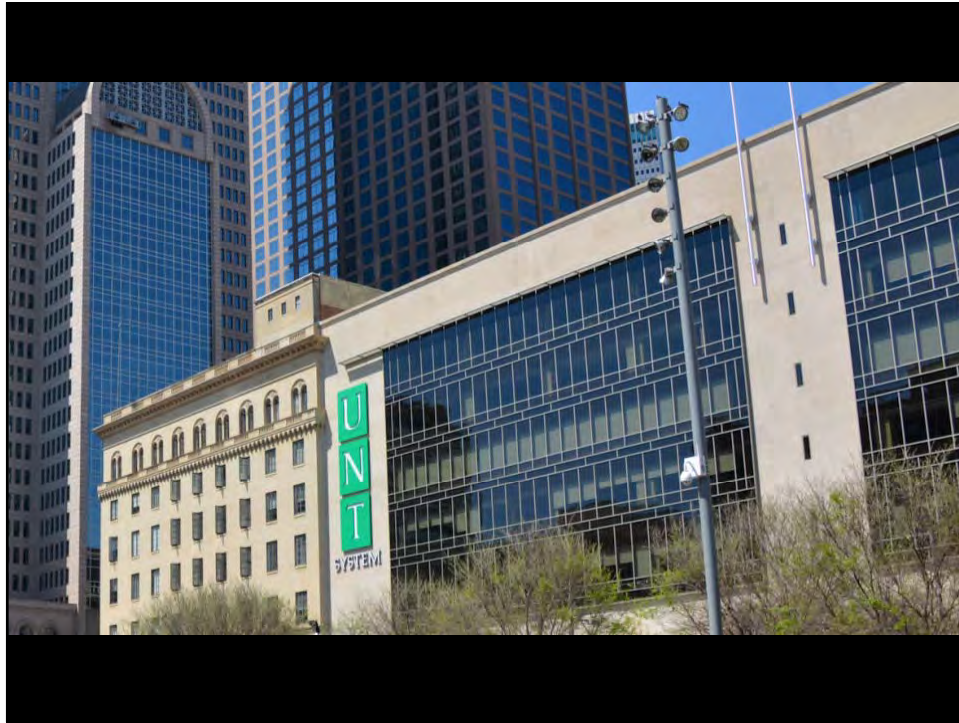


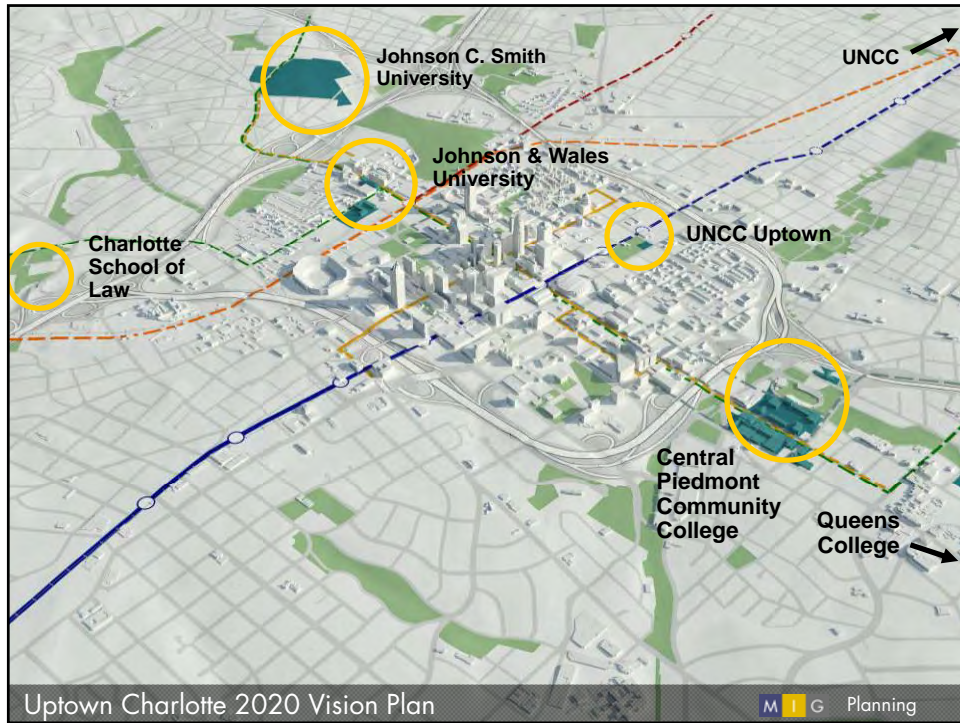
Looking North on Tryon at 6th





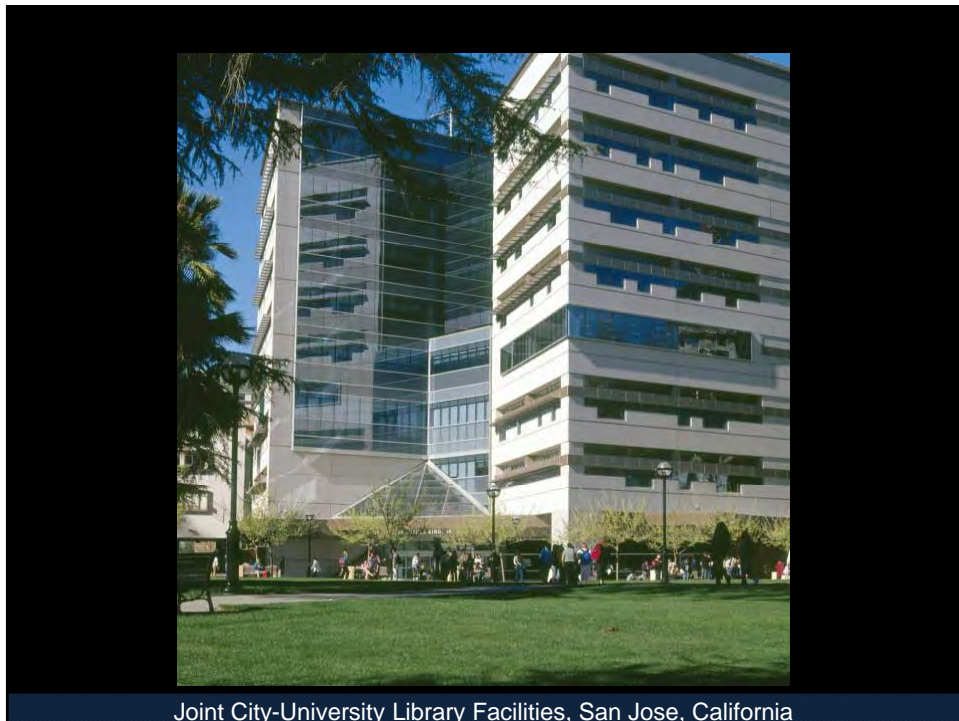






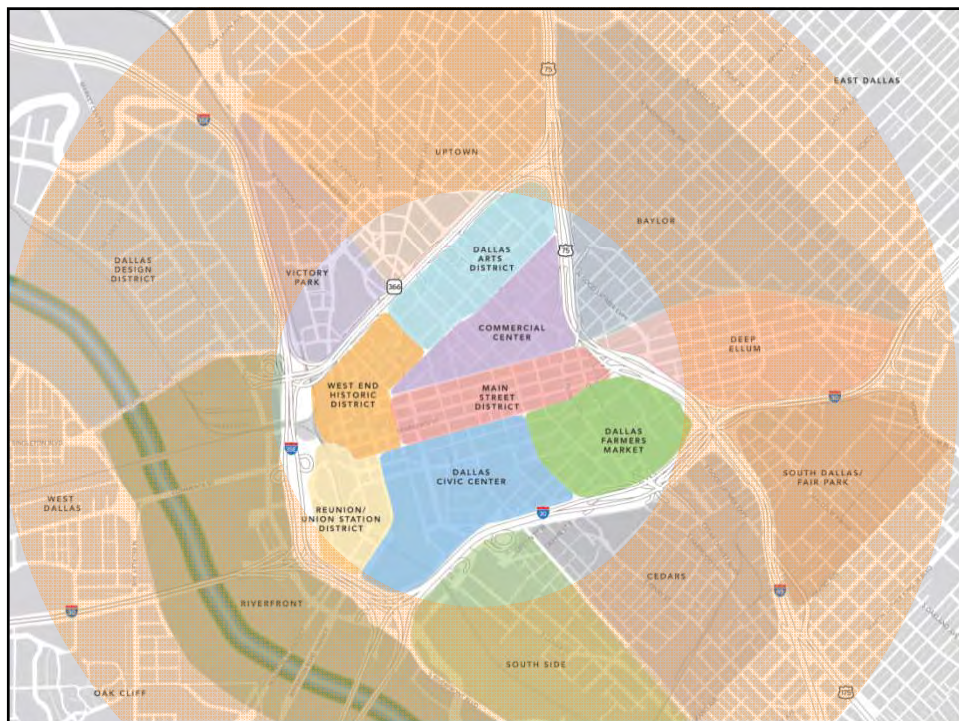


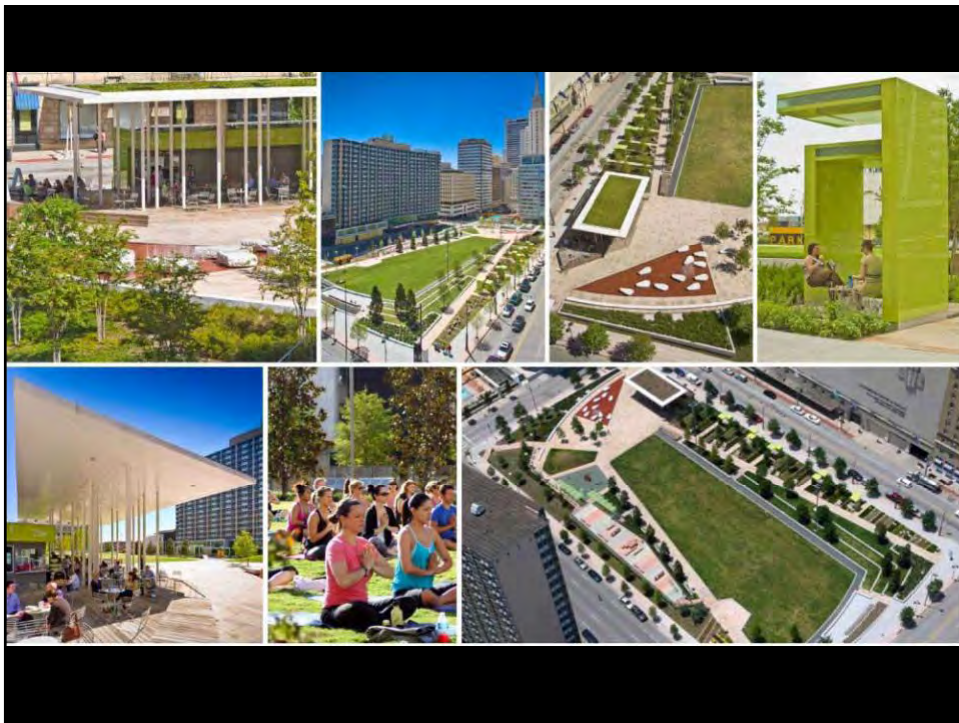
Shared Center City Student Union, Belfast, Northern Ireland



Joint City-University Library Facilities, San Jose, California

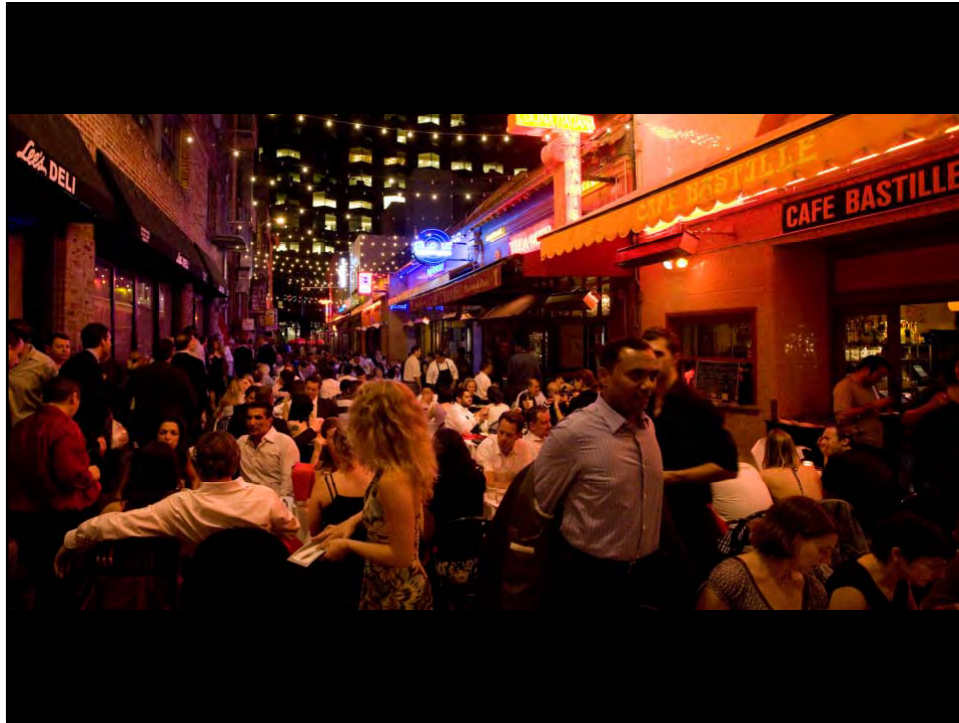


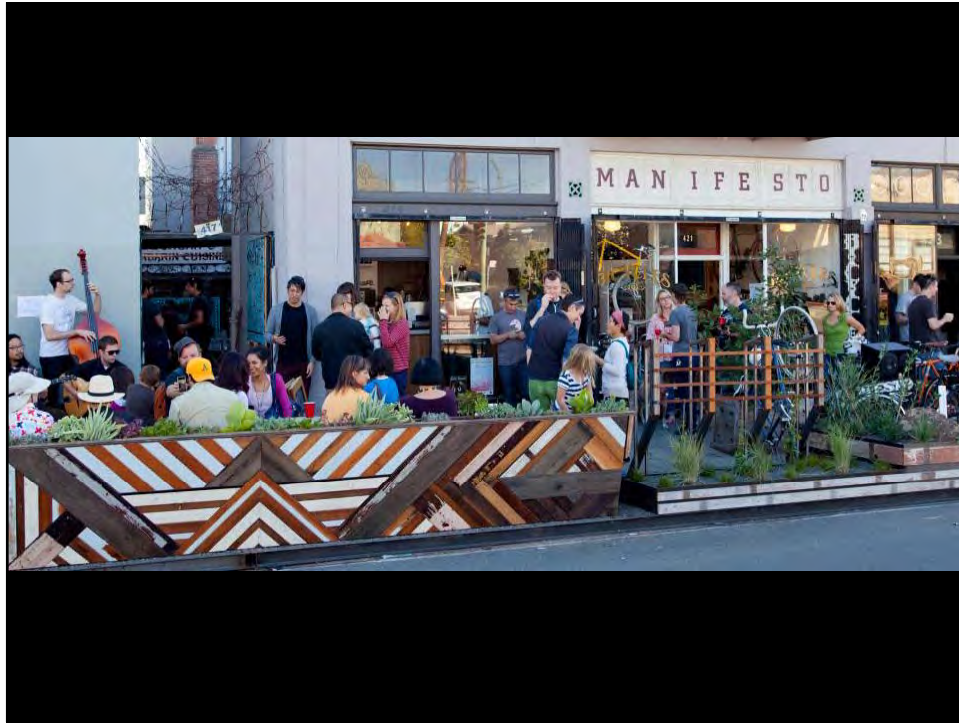










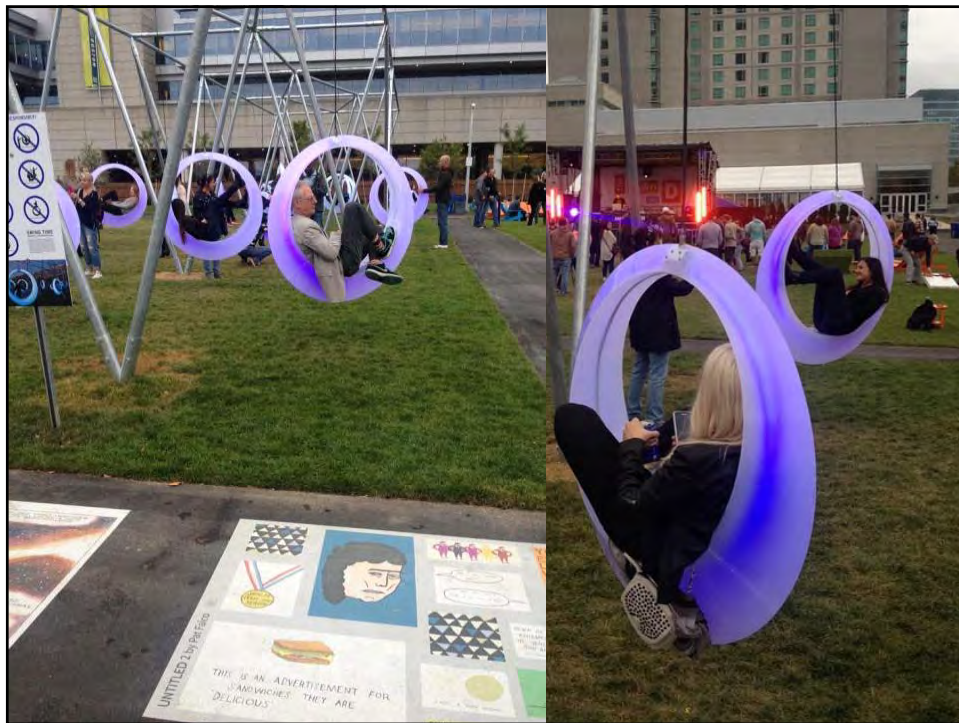




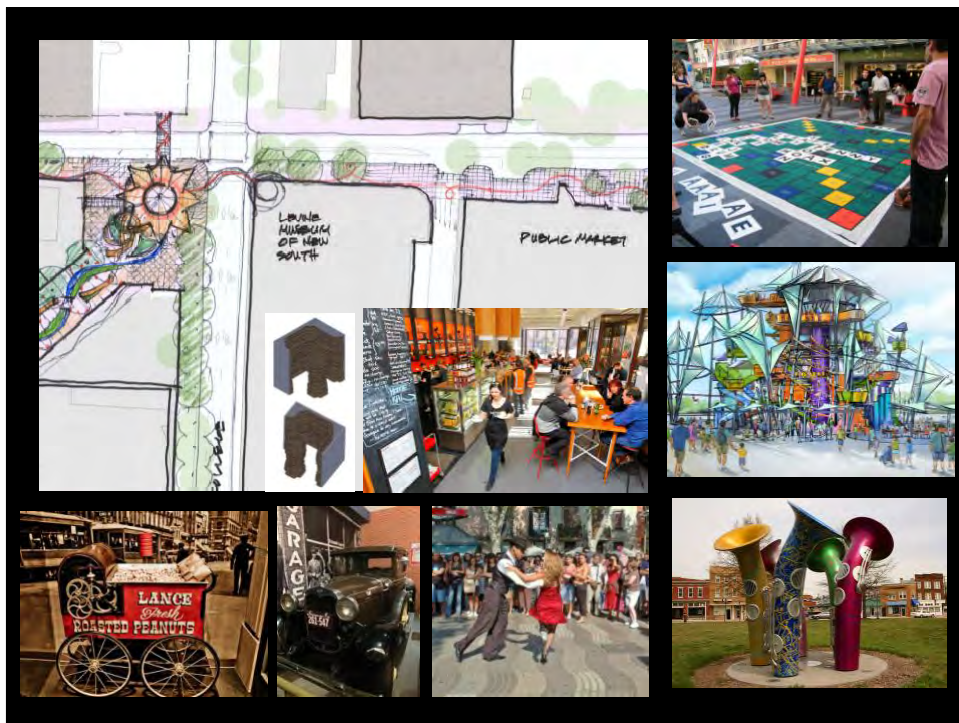
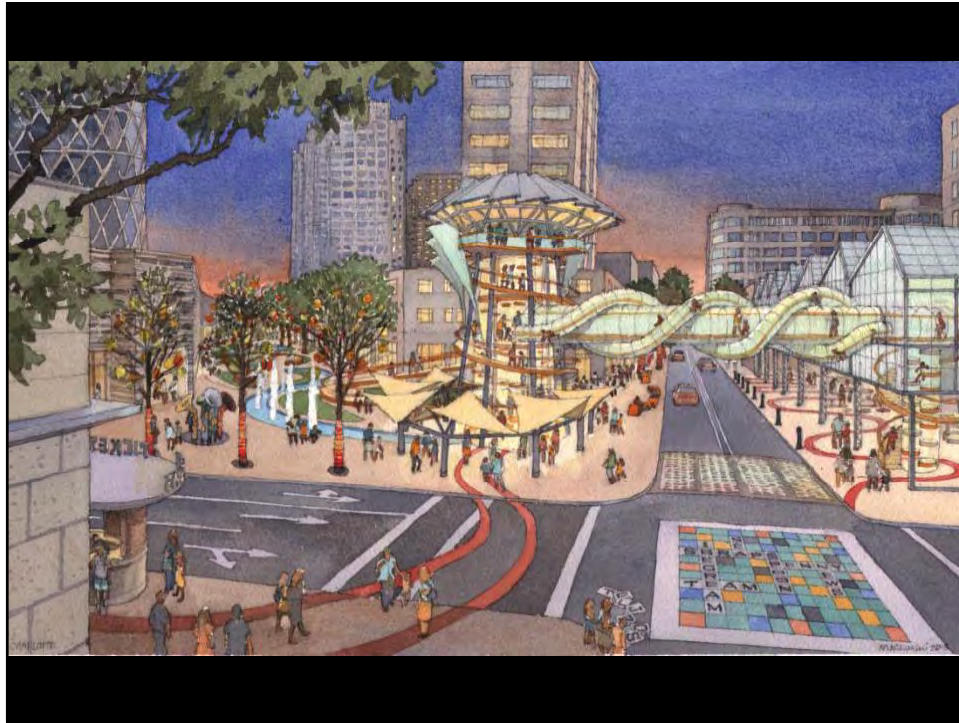








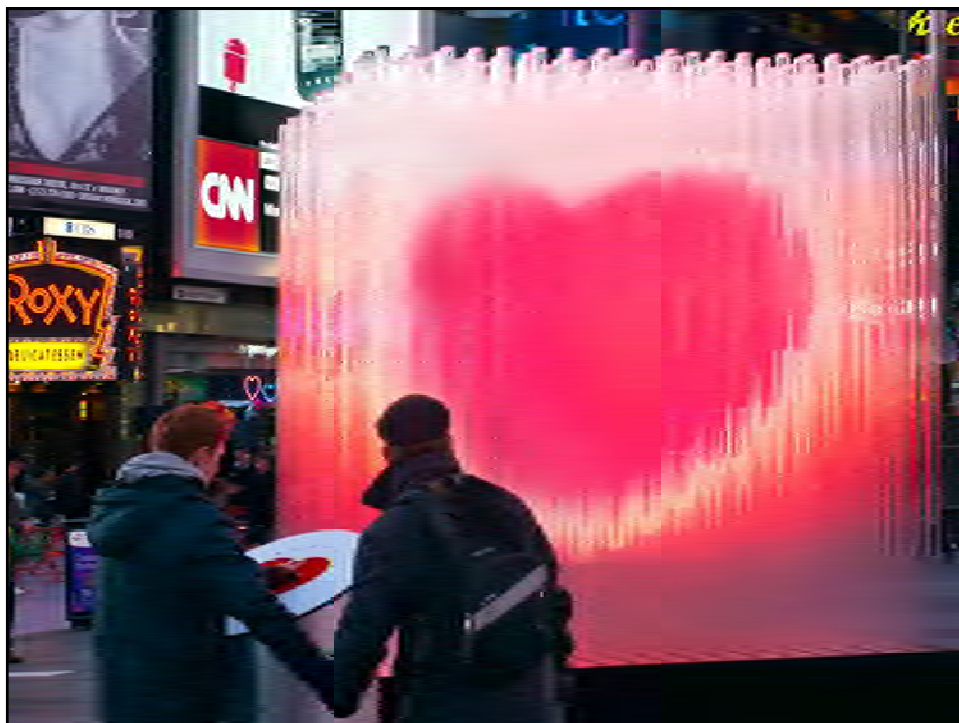




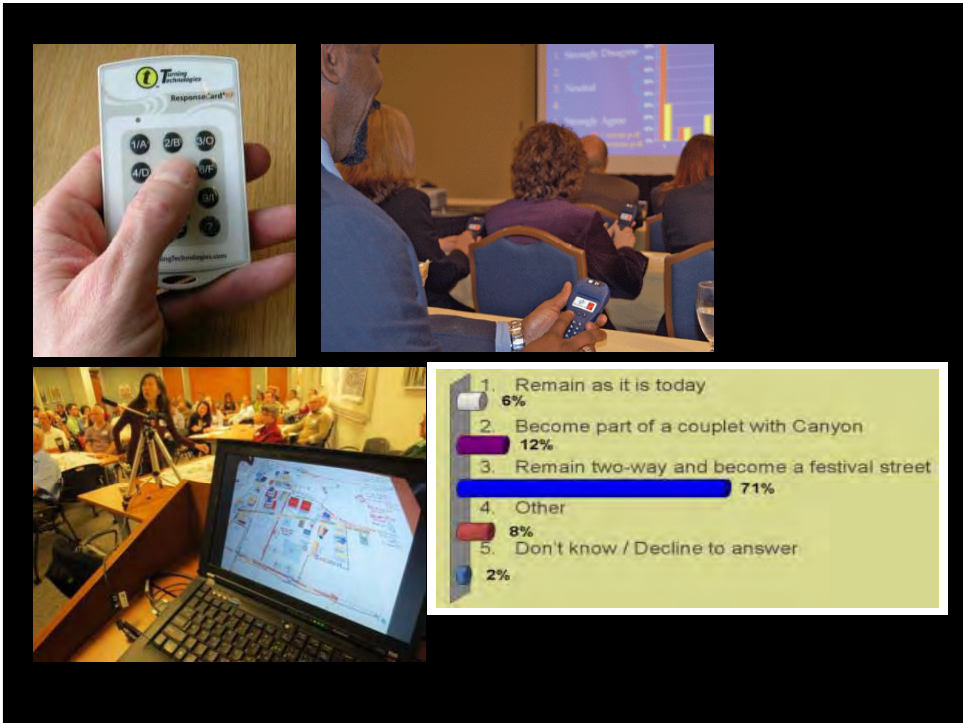












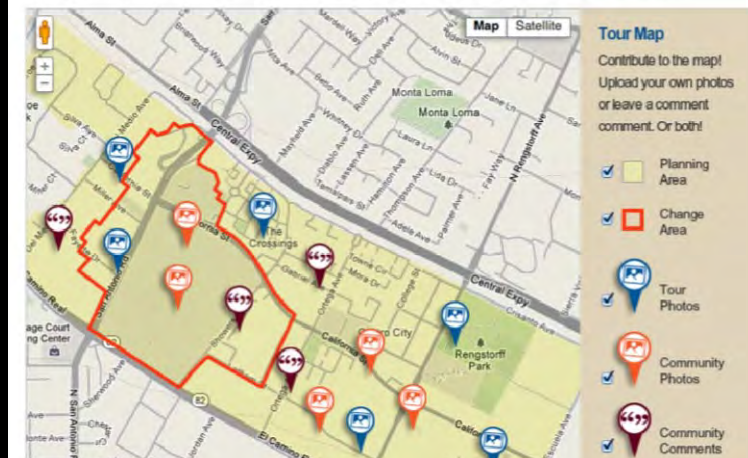


Take the Self-Guided Tour!

Take a closer look at your neighborhood through this self-guided tour. Download a printable map [here](#), or take a photo tour by clicking on the stops on the map below.

After the tour, let us know your thoughts and ideas about the neighborhood:

- Upload your photos of the San Antonio area
- Upload a photo of something you want to see in neighborhood in the future
- Leave a comment about what you see in the neighborhood today and/or what you would like to see in the future



On a tablet, participants use the capability of their touchscreen to drag and drop the icons.



downtowndallas360.com

